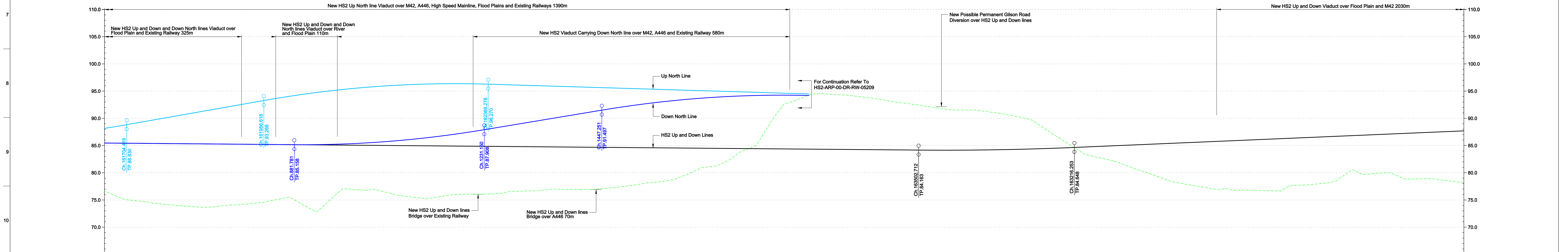


Plan
Scale 1:2500



Profile
Scale H 1:2500 V 1:250

Chainage	HS2 Up and Down Horizontal Alignment	HS2 Up and Down Vertical Alignment	Existing Level	HS2 Up and Down Proposed Level	HS2 Up and Down Cut and Fill
165+000.000			85.459	76.620	+8.839
164+900.000			85.441	75.603	+9.838
164+800.000			85.424	75.055	+10.369
164+700.000			85.407	74.831	+10.576
164+600.000			85.389	74.589	+10.790
164+500.000			85.372	74.322	+11.070
164+400.000			85.358	73.982	+11.340
164+300.000			85.338	73.582	+11.700
164+200.000			85.320	73.120	+12.200
164+100.000			85.303	72.600	+12.700
164+000.000			85.288	72.030	+13.250
163+900.000			85.274	71.410	+13.860
163+800.000			85.261	70.750	+14.510
163+700.000			85.249	70.050	+15.190
163+600.000			85.238	69.310	+15.920
163+500.000			85.228	68.530	+16.690
163+400.000			85.219	67.710	+17.500
163+300.000			85.211	66.850	+18.360
163+200.000			85.204	65.950	+19.250
163+100.000			85.198	65.010	+20.180
163+000.000			85.193	64.030	+21.160
162+900.000			85.189	63.010	+22.170
162+800.000			85.185	61.950	+23.230
162+700.000			85.182	60.860	+24.320
162+600.000			85.180	59.730	+25.450
162+500.000			85.178	58.560	+26.610
162+400.000			85.177	57.350	+27.820
162+300.000			85.176	56.100	+29.070
162+200.000			85.176	54.810	+30.360
162+100.000			85.176	53.480	+31.690
162+000.000			85.176	52.110	+33.060
161+900.000			85.176	50.700	+34.470
161+800.000			85.176	49.250	+35.920
161+700.000			85.176	47.760	+37.410
161+600.000			85.176	46.230	+38.940
161+500.000			85.176	44.660	+40.510
161+400.000			85.176	43.050	+42.120
161+300.000			85.176	41.400	+43.770
161+200.000			85.176	39.710	+45.460
161+100.000			85.176	37.980	+47.190
161+000.000			85.176	36.210	+48.960
160+900.000			85.176	34.400	+50.770
160+800.000			85.176	32.550	+52.620
160+700.000			85.176	30.660	+54.510
160+600.000			85.176	28.730	+56.440
160+500.000			85.176	26.760	+58.410
160+400.000			85.176	24.750	+60.420
160+300.000			85.176	22.700	+62.470
160+200.000			85.176	20.610	+64.560
160+100.000			85.176	18.480	+66.690
160+000.000			85.176	16.310	+68.860
159+900.000			85.176	14.100	+71.070
159+800.000			85.176	11.850	+73.320
159+700.000			85.176	9.560	+75.610
159+600.000			85.176	7.230	+77.940
159+500.000			85.176	4.860	+80.310
159+400.000			85.176	2.450	+82.720
159+300.000			85.176	0.000	+85.170

© Crown copyright and database rights 2011 Ordnance Survey 10049190

Legend

- Listed buildings
- Area of Outstanding Natural Beauty
- RAMSAR
- World Heritage Site
- SSSI
- Special Areas of Conservation
- Special Protection Areas
- National Nature Reserves
- Parks and Gardens
- Scheduled Ancient Monuments
- Historical Battlefields
- National Parks
- Flood Risk Zones
- Railway Cutting
- Railway Embankment
- Highway Cutting
- Highway Embankment

Client

1.0 13/01/12 CO MP CL

Approved

Issue Date By Chd Appt

Client

High Speed 2 Feasibility Study

Scale of A0 As Shown

Discipline Rail

ARUP

The Arc Campus, Blythe Way, Blythe Valley Park
Solihull, West Midlands B90 2JH
T +44(0)121 333 3000 F +44(0)121 213 3001
www.arup.com

Job No: 209742-00

Approved

Issue Date: 13/01/12

Discipline: Rail

Sheet: HS2-ARP-00-DR-RW-05205

Scale: 1:0