



Reported Road Casualties in Great Britain: 2010 Annual Report

Hospital admissions data on road casualties

This article describes road casualties admitted to hospital contained in Hospital Episode Statistics (HES), comparing it with serious injuries reported to the police in the STATS19 system. Information contained in HES which is unavailable from STATS19 is also explored.

- In 2010 there were around 36 thousand recorded emergency admissions to hospitals in England resulting from road traffic accidents, compared to 20 thousand serious injuries reported in STATS19. Although police and hospital data are not directly comparable, this illustrates the incompleteness of the police data for non-fatal casualties.
- Comparison of trends shown by police and hospital data is difficult, and there are known factors affecting patterns shown by the hospital data. However, with caution, HES can provide a useful secondary source of trend data, providing further evidence of a fall in casualties in recent years.
- Around two thirds of road casualties admitted to hospital and linked to the STATS19 data (linked STATS19 and HES data for 1999-2009) have minor or moderate injuries (MAIS 1 or 2). The majority (49 per cent) of these road casualties suffered from a fracture as a primary injury. The most commonly injured primary body regions include head and leg.
- Using the linked STATS19 and HES data, the proportion of car occupants with minor injuries was higher in the newest cars, suggesting less severe injuries for occupants of newer cars. For example the proportion of MAIS 1 injuries was 34 per cent for occupants of cars aged 1-4 years, and 29 per cent for occupants of cars aged 10 years or older.

Introduction

For many years the police have provided data on road accidents involving casualties reported to them, under the STATS19 system. This source provides almost all the road safety data in the annual reports. In the mid-1990s it became possible to identify road traffic casualties admitted to hospital as inpatients in England from the HES database. HES admissions data provide further useful information on road casualties, and are the focus of this article.

The coverage and trends in road accidents from the police and hospital sources differ in a number of ways, and care should be taken in making comparisons. In previous reports we have explained the differences between the two data sources and issues affecting the quality of HES data. In particular, article 5 of Reported Road Casualties Great Britain: 2008 summarised the strengths and weaknesses of various data sources of road casualty.

Part 1: Comparing HES and STATS19 data on road casualties

Background

The HES inpatient database is compiled by the Information Centre for Health and Social Care (IC). It contains data on inpatient admissions to hospitals in England¹. Each record represents an episode of care under a particular consultant, and contains clinical details of the patient's condition, coded to the International Classification of Diseases 10th revision (ICD-10)². This coding allows inpatients whose injuries have been caused by a road traffic accident to be identified.

There are many definitional differences between HES and STATS19; for example, HES covers only patients admitted to a hospital bed whereas STATS19 casualty records relate to those injured in traffic accidents on the public highway that become known to the police. However, it is possible to filter the HES data so that it is broadly comparable with STATS19. Annex A provides some details of the HES data used in this article, and some factors that should be taken into account when interpreting the figures.

The police definition of serious injury covers casualties admitted to hospital, as well as those with specific types of injury (for example fractures or severe cuts). This means that in theory all patients in HES admitted following a road traffic accident should also appear as seriously injured casualties in the police data. However, in practice not all road casualties are reported to the police. In addition, there is evidence that in some cases casualties that meet the definition of a serious injury are only recorded by the police as having slight injuries³. The following comparisons are based on STATS19 serious injuries and HES emergency road traffic accident admissions, except where otherwise stated.

Comparing numbers and characteristics of casualties in HES and STATS19: 2010

Table 1 shows the number of seriously injured casualties in STATS19 in England and provisional figures for the number of **non-fatal** emergency road traffic admission episodes recorded in HES in 2010. Note that the figures are not directly comparable – the police definition of serious injury is wider than hospital admissions, and many of those who attend hospital will not become known to the police.

- It has long been acknowledged that not all road casualties become known to the police³, and these figures illustrate this. The number of road traffic admissions recorded in HES (36 thousand in 2010) is nearly twice the total number of serious injuries in STATS19 (20 thousand).
- The number of pedal cyclist admissions in HES is more than three times the number of seriously injured casualties in STATS19, and for child pedal cyclists the HES figure is more than six times larger (Table 1). Pedal cyclist casualties involving no other vehicles account for the majority of the discrepancy between STATS19 and HES, with HES recording a much higher proportion of casualties from such accidents (67 per cent of all pedal cyclist casualties in HES compared to 7 per cent in STATS19). In HES, casualties

¹ HES website: <http://www.hesonline.nhs.uk/Ease/servlet/ContentServer?siteID=1937&categoryID=87>

² ICD website: <http://www.who.int/classifications/apps/icd/icd10online/>

³ See for example Road Safety Research Report No. 69: Under-reporting of Road Casualties Phase 1 <http://www2.dft.gov.uk/pgr/roadsafety/research/rsrr/theme5/underreportingofroadcasual.pdf>

were assumed to have been involved in a traffic accident unless otherwise stated. Therefore, it may be possible that HES over-estimates the number of cyclists admitted after road traffic accidents. This is likely to affect the cyclist figures more than other vehicle types as cyclists are more likely to have been off-road.

- Despite the difference in the number of casualties recorded, the two datasets show broadly similar distributions in terms of the sex and age group of casualties from road traffic accidents. The most notable exception being that a considerably higher proportion of pedal cyclist casualties in HES are children (Table 1). Chart 1 illustrates the number of casualties recorded in STATS19 and HES by age group, for the main road user groups.
- STATS19 and HES show a similar pattern by month of occurrence of accidents and admissions (Chart 2). Again, the most notable difference is for cyclists. This is unsurprising since cyclists are the least well reported user group in STATS19, and there are differences in the types of pedal cycle accident covered in the two data sources.

Overall, these comparisons suggest that both data sources cover a broadly representative (though different) subset of the more seriously injured road casualties in England. HES inpatient data provides no information on slightly injured casualties and only includes fatalities that died in hospitals. STATS19 also provides information on fatalities who did not die in hospitals, those with less severe injuries, and more detailed information on accident circumstances that are not available in HES.

Table 1: Comparison of emergency road traffic hospital admissions (HES) and police recorded seriously injured road casualties (STATS19): England 2010
(RAS web table RAS55001)

Please note: figures are not directly comparable (see text) Number/percentage

	Pedestrians		Pedal cyclists		Motorcyclists		Car occupants		All road users ¹	
	HES ^P	S19	HES ^P	S19	HES ^P	S19	HES ^P	S19	HES ^P	S19
Total	7,027	4,551	7,476	2,456	6,007	4,240	12,788	7,541	36,184	19,702
Other vehicle involved	6,784	4,551	2,273	2,276	2,930	3,157	7,051	5,154	19,590	11,416
No other vehicle	0	0	4,605	180	2,519	1,083	4,571	2,387	12,875	8,286
Unknown	243	0	598	0	558	0	1,158	0	3,719	0
% Other veh. (of known)	100	100	33	93	54	74	61	68	60	58
% No other veh. (of known)	0	0	67	7	46	26	39	32	40	42
Male	4,373	2,702	5,985	1,999	5,473	3,883	6,975	4,281	24,576	13,479
Female	2,654	1,849	1,491	457	532	357	5,802	3,259	11,603	6,222
% Male	62	59	80	81	91	92	55	57	68	68
% Female	38	41	20	19	9	8	45	43	32	32
Age 0-15	2,130	1,401	2,141	351	165	36	645	287	5,245	2,121
Age 16-64	3,654	2,326	4,778	1,930	5,656	4,062	9,502	6,060	25,437	15,028
Age 65+	1,231	739	547	135	178	95	2,619	1,066	5,452	2,232
% Age 0-15	30	31	29	14	3	1	5	4	14	11
% Age 16-64	52	51	64	79	94	96	74	80	70	76
% Age 65+	18	16	7	6	3	2	20	14	15	11

P Provisional data.

¹ Includes other road user types and cases where road user type is unknown.

Chart 1: STATS19 seriously injured road casualties and HES emergency road traffic admissions by age and road user type: England 2010

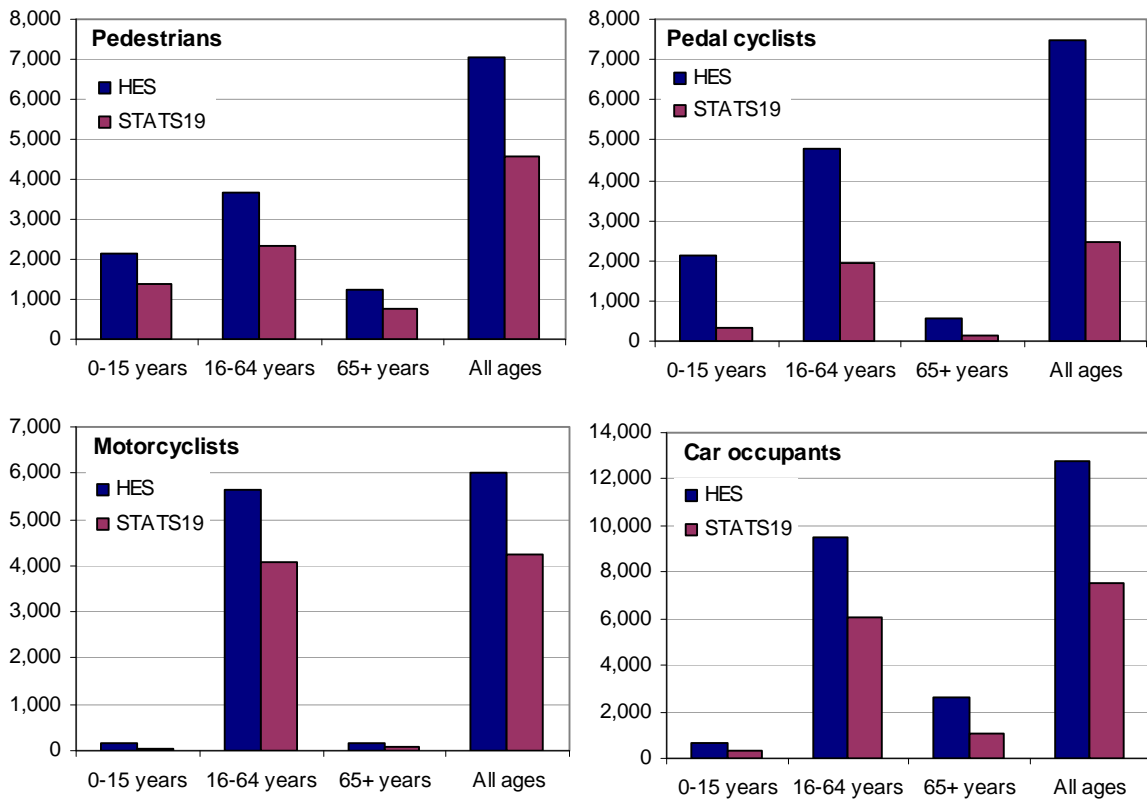
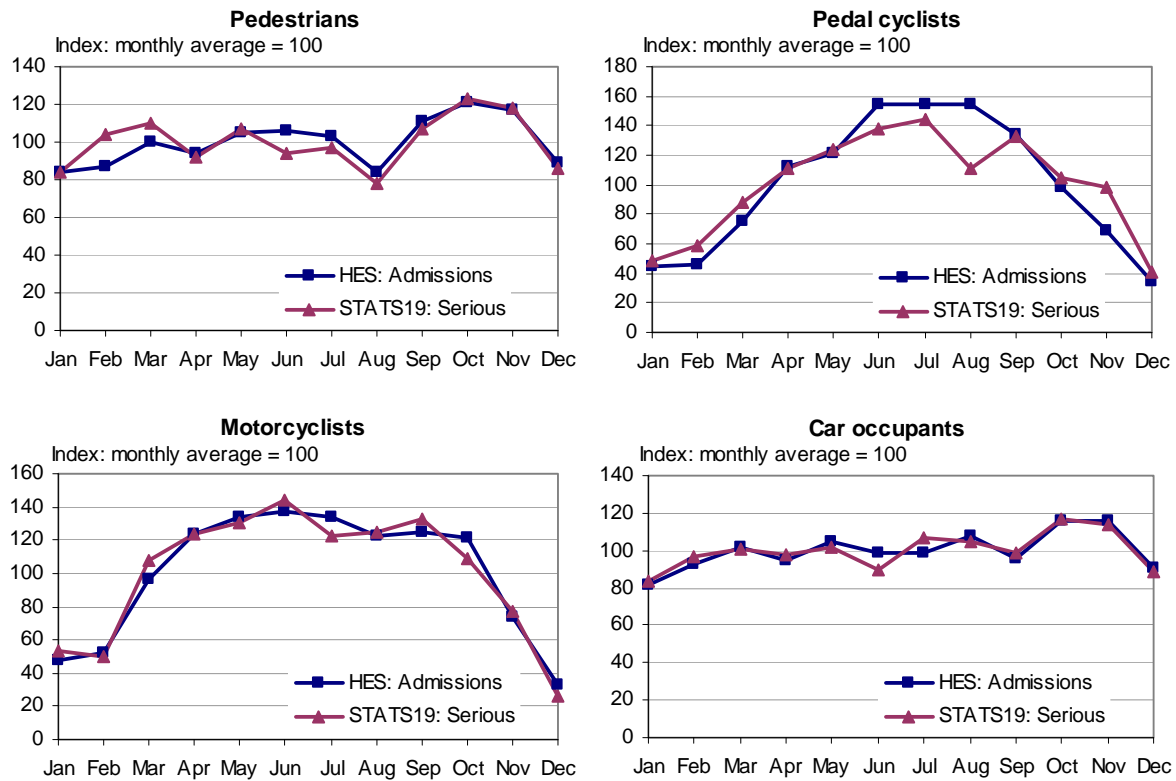


Chart 2: STATS19 seriously injured road casualties and HES emergency road traffic admissions by month and road user type: England 2010



Comparing trends shown by STATS19 and HES 2000 – 2010

The previous section illustrates the difference in the **number** of casualties recorded in the STATS19 and HES datasets. However some **trends** shown by the two sources are also different. It is likely that the difference is the result of a number of factors, and we have explored a number of these in previous reports. For example, there have been a number of known changes in hospital practices and data systems in recent years. Our 2006 report⁴ considered factors affecting the HES data, which mean care is needed when using it for trend analysis.

Chart 3 presents the latest trends in STATS19 recorded seriously injured road casualties and HES emergency road traffic admissions for England. Please note that the two groups are not directly comparable.

- Between 2009 and 2010, the number of emergency road traffic admissions in HES and serious injuries in STATS19 fell around the same percentage (7 per cent reduction in HES and 8 per cent reduction in STATS19). The HES figure is based on provisional data (see Annex A) so should be treated with caution.
- Overall, STATS19 shows a continuous fall in serious injuries while admissions recorded in HES had diverging patterns during certain periods (Chart 3), most notably between 2002 and 2005. Over this period, STATS19 recorded a 19 per cent reduction in seriously injured road casualties while HES recorded a 14 per cent increase in admissions. Both sources show reductions between 2000 and 2002 (a 5 per cent fall by STATS19 and a 2 per cent fall by HES), between 2005 and 2008 (12 per cent and 9 per cent falls respectively) and similar reductions were seen in the most recent year.

As discussed in previous years' articles, the increase in admissions between 2002 and 2005 appears to be associated with changes in hospital practices, in particular an increase in the proportion of inpatients admitted for short periods. This is likely to relate to increasing numbers being admitted to short-stay wards from Accident and Emergency for observation and assessment. Therefore, the trend shown by HES in Chart 3 probably does not equate to a genuine rise in serious road casualties. Chart 4 shows the trends in emergency road traffic admissions by length of stay⁵, based on the initial episode of hospital treatment following admission.

- Chart 4 shows between 2000 and 2010 the number of 0 day emergency admissions increased by 111 per cent, compared with an 8 per cent fall in one day admissions and a 31 per cent fall in the number of patients admitted for two or more days. This compares with a reduction of 42 per cent in serious injuries in STATS19 over the same period.
- The number of emergency road traffic accident admissions for zero days (i.e. not overnight) has increased continuously between 2000 and 2009 (Chart 4). There has been a 3 per cent fall in such admissions for the first time between 2009 and 2010.

⁴ See article 6 published in Road Casualties Great Britain 2006 for details:

<http://webarchive.nationalarchives.gov.uk/+http://www.dft.gov.uk/pgr/statistics/datatablespublications/accidents/casualtiesgreatbritain2006>

⁵ This is based on the length of the admission episode in HES, which in around 10 per cent of cases will understate the actual length of spell in hospital. See Annex A for further details.

Chart 3: STATS19 seriously injured road casualties and HES emergency road traffic admissions: England 2000-2010

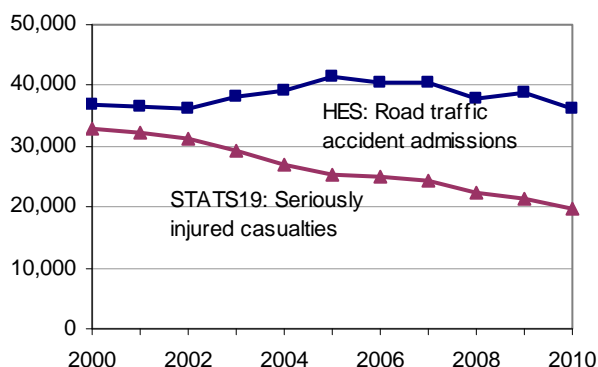
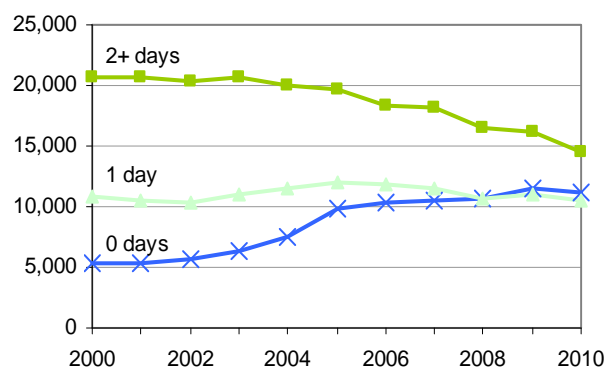


Chart 4: Emergency road traffic hospital admissions by length of episode: HES 2000-2010



The following analyses are focused on hospital road traffic admissions of two or more days. The focus has shifted slightly partly because the trends in the most seriously injured casualties are of particular interest in road safety, and these casualties are more likely to require longer hospital stays. In addition, longer admissions may be of greater stability since they should be less affected by changes in hospital practices.

In summary, admissions of two or more days should provide a better indication of the underlying trends in the incidence of more serious road casualties than the total number of admissions in HES. Chart 5 shows the trends in fatalities and serious injuries in STATS19, and emergency road traffic admissions for two or more days in HES.

- Until 2005, STATS19 serious injuries fell more quickly than HES emergency road traffic admissions for two or more days, but since then they have followed a similar trend (Chart 5). Admissions fell by 27 per cent between 2005 and 2010, while STATS19 serious injuries fell by 22 per cent over this period.
- Admissions lasting two or more days have generally followed a more similar trend to STATS19 fatalities over the last decade, although the falls in fatalities seen in the last three years have not been matched by HES.

Chart 5: STATS19 serious injuries and fatalities, and HES emergency road traffic admissions for 2 or more days: England 2000-2010

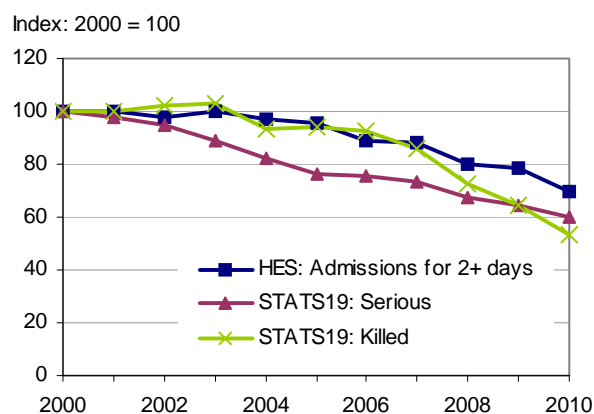
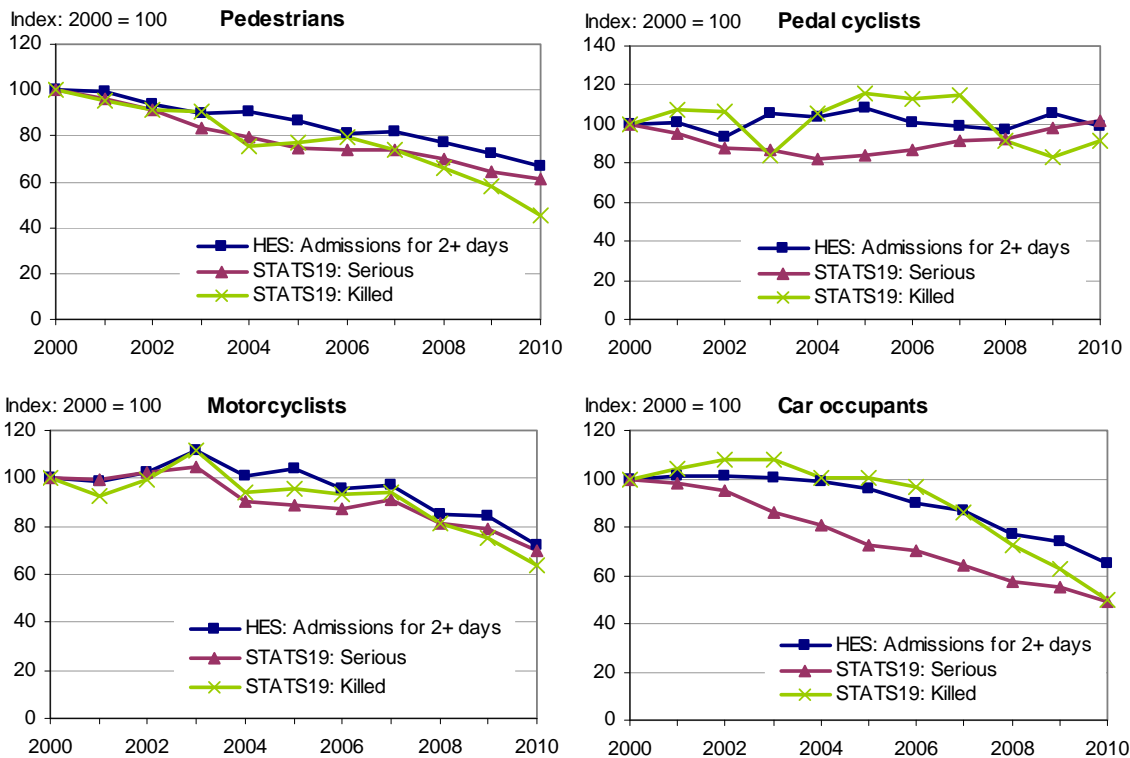


Chart 6 shows the trends in fatalities and serious injuries in STATS19, and emergency road traffic admissions for two or more days in HES for the main road user groups.

- Pedestrian and motorcycle user admissions have very broadly followed similar trends to both serious injuries and fatalities in STATS19. However, the reductions in pedestrian fatalities in the previous two years were not matched by HES admissions of two or more days.

- Car occupant admissions have followed a trend more similar to fatalities than serious injuries over the last decade (although it has become more similar to serious injuries in recent years). Pedal cyclist HES admissions follow a different trend to serious injuries in STATS19, although as noted above there are differences in coverage in these two datasets.

Chart 6: STATS19 serious injuries and fatalities, and HES emergency road traffic admissions for 2 or more days by road user type: England 2000-2010



Changes in hospital admissions and recording practices would also affect all other hospital admissions as well as road traffic accident admissions. Chart 7 shows emergency road casualty admissions as a proportion of all emergency injury admissions.

- The proportion of all emergency injury admissions made up by road casualties has fallen steadily over the past ten years, from 6.1 per cent in 2000 to 3.7 per cent in 2010. Among those admitted for two or more days the equivalent proportion fell from 6.8 per cent to 3.9 per cent.
- The above suggests a reduction in the incidence of more seriously injured casualties. However, this could be affected by trends in other causes of injury (such as falls and assaults).

Chart 7: Emergency road traffic admissions as a proportion of all emergency injury admissions: HES 2000-2010

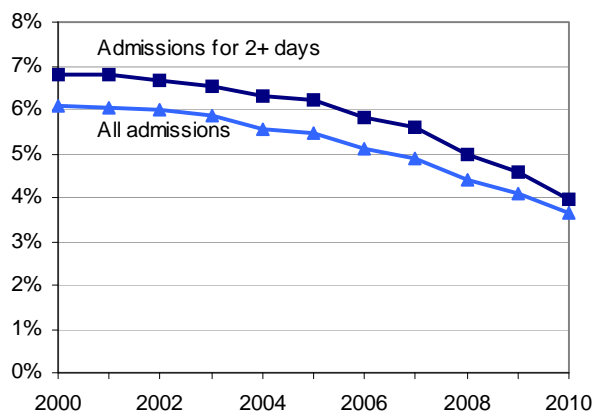


Table 8: HES emergency road traffic admissions and STATS19 seriously injured road casualties: England 2006-2010 (RAS web table RAS55001)

Please note: figure are not directly comparable (see text) Number (thousands)/percentage

	2006	2007	2008	2009	2010 ^P	Change from:	
						2006	2009
Hospital Episode Statistics: Emergency admissions¹							
All admissions ²	4,579.0	4,626.6	4,826.7	5,055.5	5,155.9	13	2
All injury admissions ²³	794.8	825.0	862.8	945.0	988.7	24	5
All road traffic accident admissions							
All road casualties	40.5	40.3	38.0	38.8	36.2	-11	-7
Pedestrians	7.7	7.8	7.4	7.2	7.0	-8	-2
Pedal cyclists	6.8	6.9	6.9	7.6	7.5	10	-2
Motorcyclists	7.3	7.4	6.7	6.8	6.0	-18	-12
Car occupants	14.9	14.5	13.7	13.9	12.8	-14	-8
Male ⁴	28.1	28.0	25.9	26.6	24.6	-12	-8
0-15 years	4.4	4.3	3.8	4.0	3.6	-18	-9
16-64 years	21.4	21.3	19.6	20.0	18.4	-14	-8
65+ years	2.2	2.4	2.4	2.6	2.5	13	-4
Female ⁴	12.5	12.4	12.1	12.2	11.6	-7	-5
0-15 years	2.0	1.9	1.7	1.6	1.6	-19	0
16-64 years	7.7	7.8	7.5	7.5	7.1	-9	-6
65+ years	2.8	2.7	2.9	3.0	2.9	5	-3
Road traffic accident admissions for episodes of 2 or more days							
All road casualties	18.4	18.2	16.5	16.2	14.5	-21	-11
Pedestrians	3.9	3.9	3.7	3.5	3.2	-18	-8
Pedal cyclists	2.6	2.6	2.5	2.8	2.6	-2	-6
Motorcyclists	4.2	4.2	3.7	3.7	3.1	-25	-15
Car occupants	6.1	5.9	5.2	5.0	4.4	-27	-12
Male ⁴	12.8	12.8	11.4	11.2	9.8	-24	-12
0-15 years	1.5	1.4	1.2	1.2	1.0	-31	-17
16-64 years	10.2	10.1	9.0	8.7	7.6	-25	-12
65+ years	1.2	1.3	1.3	1.3	1.2	0	-6
Female ⁴	5.5	5.4	5.1	5.0	4.6	-16	-8
0-15 years	0.7	0.6	0.5	0.5	0.5	-27	-1
16-64 years	3.3	3.3	3.0	2.9	2.6	-21	-11
65+ years	1.6	1.6	1.6	1.6	1.6	-2	-3
STATS19: Seriously injured casualties							
All road casualties	24.9	24.2	22.3	21.3	19.7	-21	-8
Pedestrians	5.5	5.5	5.2	4.8	4.6	-17	-5
Pedal cyclists	2.1	2.2	2.2	2.4	2.5	17	3
Motorcyclists	5.3	5.6	4.9	4.8	4.2	-20	-12
Car occupants	10.8	9.8	8.8	8.4	7.5	-30	-10
Male ⁴	17.4	16.9	15.4	14.9	13.5	-22	-9
0-15 years	1.7	1.7	1.5	1.5	1.4	-20	-7
16-64 years	14.2	13.8	12.6	12.1	10.9	-24	-10
65+ years	1.1	1.1	1.1	1.1	1.0	-8	-3
Female ⁴	7.5	7.4	6.9	6.5	6.2	-17	-3
0-15 years	0.9	0.9	0.8	0.7	0.8	-19	3
16-64 years	5.2	5.1	4.7	4.4	4.2	-19	-6
65+ years	1.2	1.2	1.2	1.2	1.2	-2	2

P Provisional data. HES data for the 2009/10 financial year is provisional. All STATS19 data is final.

1 Finished inpatient admission episodes excluding in-hospital deaths.

2 Figures may be slightly different to previously published

3 Episodes with an external cause of injury recorded (ICD-10 codes V01 to Y98).

4 Includes cases where age is not recorded.

Table 8 above summarises the HES and STATS19 serious injury data on road casualties between 2006 and 2010. In general (with the exception of pedal cyclists) the patterns shown are **broadly** similar. For example both data sources show car occupants having greater reductions than other road users, and both show children having larger reductions in recent years than adults.

Part 2: Linking STATS19 and HES data

As outlined in previous reports, the Department for Transport has undertaken work to link data from STATS19 and HES at individual record level. This brings together the details of accident circumstances and vehicles involved contained in STATS19 with the information about injuries sustained found in HES, creating a rich source for research.

Table 9 shows the latest results of the data linkage, including previously unavailable data, from 1999 to 2009. Over the period for which data has been linked, around a third of HES records have been linked to STATS19, with a similar proportion of STATS19 serious records linked to HES.

The trends in the number and proportion of STATS19 records linked are affected by an improvement in the quality and completeness of data for the linkage variables, in particular better recording of casualty postcode in STATS19. For further details of the linking methodology or extracts of the linked dataset for research, please contact roadacc.stats@dft.gsi.gov.uk

Table 9: Results of linking STATS19 and HES data: England 1999 – 2009
(RAS web table RAS55001)

		Number (thousands)/percentage											
		1999	2000	2001	2002	2003	2004	2005	2006	2007	2008	2009	99-09
STATS19 serious	Linked records	9.3	10.2	10.3	10.0	9.9	10.0	10.3	10.3	10.8	10.0	10.1	111.2
	Total records	33.7	33.0	32.2	31.3	29.3	27.1	25.2	24.8	24.2	22.2	21.3	304.2
	% Matched	27	31	32	32	34	37	41	42	45	45	47	37
STATS19 slight	Linked records	6.1	6.6	6.8	6.5	7.1	7.6	8.2	8.0	8.0	7.5	8.0	80.2
	Total records	248.5	249.9	244.6	234.8	225.6	219.0	212.1	200.7	192.7	179.6	173.4	2,380.9
	% Matched	2	3	3	3	3	3	4	4	4	4	5	3
STATS19 all injuries	Linked records	15.3	16.8	17.1	16.5	17.0	17.6	18.6	18.3	18.8	17.5	18.0	191.4
	Total records	282.2	282.8	276.8	266.0	254.9	246.0	237.3	225.6	217.0	201.8	194.7	2,685.1
	% Matched	5	6	6	6	7	7	8	8	9	9	9	7
Hospital road transport admissions¹	Linked records	15.3	16.8	17.1	16.5	17.0	17.6	18.6	18.3	18.8	17.5	18.0	191.4
	Total records	52.3	51.1	50.1	49.6	53.0	54.3	57.9	56.8	56.5	56.2	60.0	597.9
	% Matched	29	33	34	33	32	32	32	32	33	31	30	32

¹ The total number of records relates to files provided by the NHS Information Centre, and includes all road transport accidents, including those recorded as non-traffic accidents. Some cleaning of the data was carried out prior to matching and this means that totals will be different from HES figures published elsewhere.

Maximum Abbreviated Injury Scale

Severity of injury is known to be prone to misclassification in STATS19 due to the difficulties of such assessment by non experts at the scene of the accident. In addition, STATS19 does not distinguish between different injury severities of casualties admitted to hospital.

The Maximum Abbreviated Injury Scale (MAIS) was used to further investigate injury severity using the matched dataset. This is an internationally recognised method of measuring injury severity used in crash investigations. The scale runs from 0 to 6, signifying no injury through to maximum injury. For further details of MAIS please see Annex B.

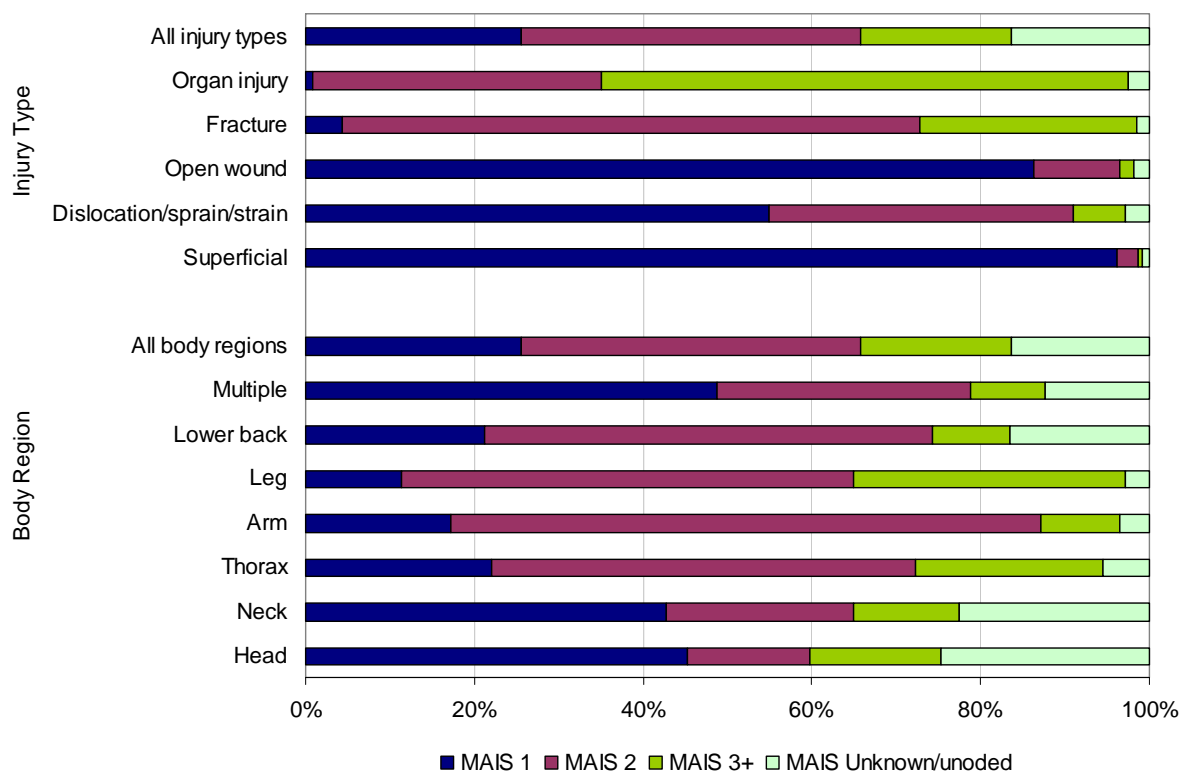
Body region, injury type and injury severity of road casualties

The body region and injury type of road casualties were derived from the primary diagnosis if the ICD-10 code identified an “injury/poisoning/certain other consequences of external causes” (S and T codes of ICD-10). Most road traffic casualty admissions (98 per cent) had a S or T primary diagnosis code.

Chart 10 presents the proportion of casualties in the linked dataset (1999-2009) with selected primary injury types and body regions by injury severity.

- The majority of road casualties in the linked dataset had either minor (MAIS 1 - 26 per cent) or moderate (MAIS 2- 40 per cent) injuries. Sixteen per cent have a serious (MAIS 3 or above) or graver injury according the MAIS. The remaining casualties had unknown or uncoded MAIS.
- Based on the primary diagnosis, the majority of road casualties sustained a fracture (49 per cent), although the actual percentage may be higher if other diagnoses were also considered. Head and leg were the most common primary body regions injured, both representing just under 30 per cent of all primary injuries.
- Not unexpectedly, individuals with superficial primary injuries, also had the highest proportion (96 per cent) of minor injuries overall (MAIS 1). Casualties admitted to hospital with a primary injury of organ or internal injuries had the highest proportion (62 per cent) of MAIS 3 or higher.
- Road casualties with primary injuries to the leg region had the highest proportion (32 per cent) of MAIS 3 or higher, followed by primary injuries to the thorax (22 per cent). Perhaps unexpectedly, primary injuries to multiple body regions and head injuries had the highest proportions of MAIS 1 (49 per cent for multiple body regions, and 45 per cent for head injuries). This may be potentially due to difficulties in assessing the seriousness of injuries to these body regions at the scene of the accident, leading hospital admissions as a precautionary measure. However, no details were available in this dataset to confirm this hypothesis.
- The pattern of the overall injury severity based on the primary body region of injury was more unexpected compared to the relationship based on the primary injury type; for example, the high proportion of minor injuries (MAIS 1) among casualties with head injuries. It may be harder for paramedics to quickly assess injury severity to body regions at the scene of the accident. Once admitted to hospital, doctors may able to use the primary injury type to make a rapid assessment of the expected MAIS of the patient.

Chart 10: Proportion of road casualties with selected injury type, and to selected body regions by injury severity in the linked STATS19 and HES data: England 1999- 2009
(RAS web table RAS55001)



Severity of injury by road user type and age group

For the following analysis, the road user type is derived from STATS19 data, while the age of the casualties is derived from HES data. These different sources were considered to give more accurate information on the road user type and age.

Table 11 presents the proportion of road casualties in the linked dataset, in each MAIS group.

- Motorcycle users have the highest proportion of serious injuries, 24 per cent have MAIS of three or more (Table 11). The corresponding figure for all road users is 18 per cent.
- Car occupants have the highest proportion of minor injuries (MAIS 1), 30 per cent of all injuries sustained. This is higher than the average for all road users (26 per cent).

Table 11: Road casualties by MAIS group for linked STATS19 and HES data: England 1999-2009
(RAS web table RAS55001)

MAIS code	Percentage/ Number				
	Pedestrians	Pedal cyclists	Motorcycle users	Car occupants	All road users ¹
1	25	28	15	30	26
2	43	39	52	34	40
3+	19	18	24	14	18
Total number of casualties ²	48,685	15,205	36,610	83,331	191,442

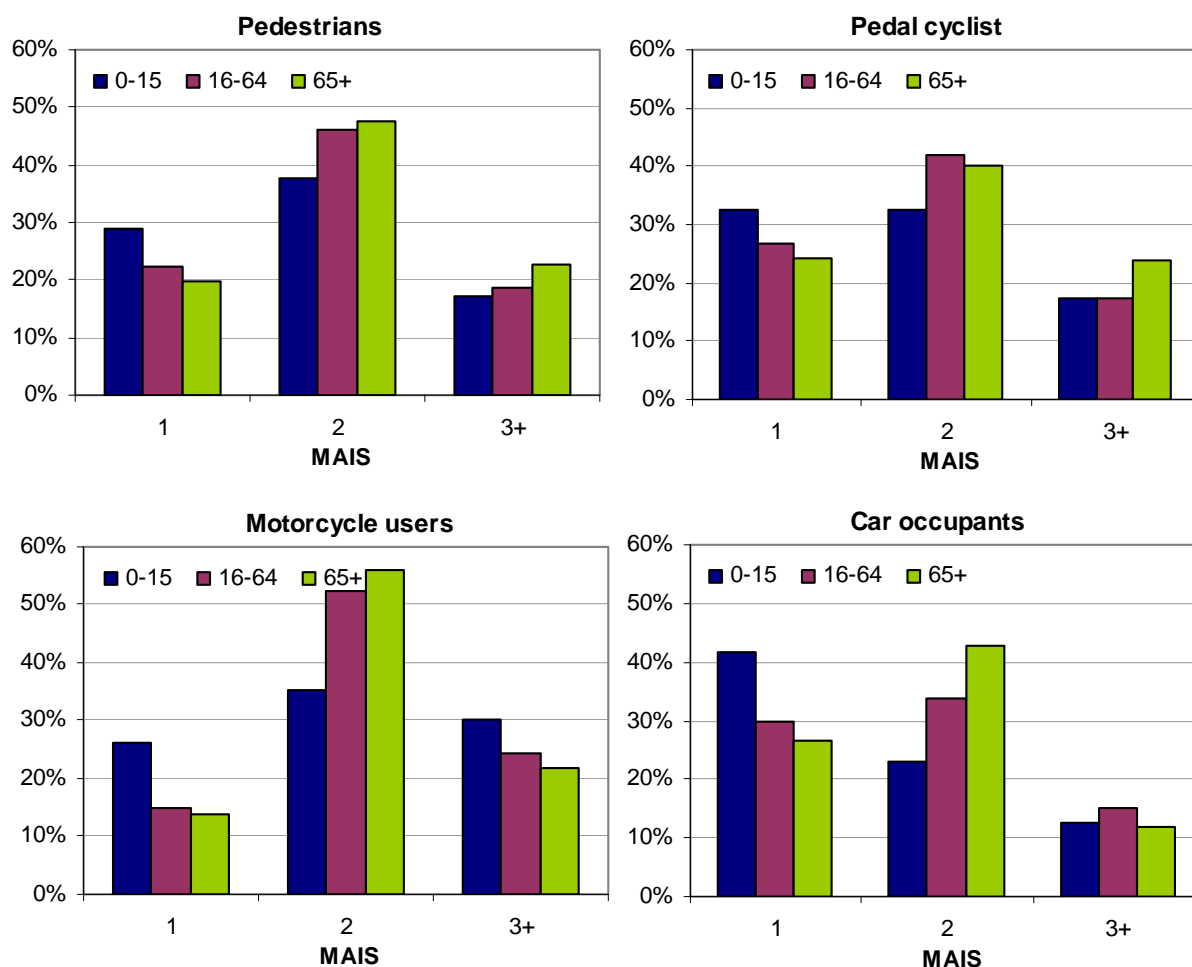
¹ include other road user types including cases where road user type is now known

² include cases where the AIS is unknown or uncoded.

Chart 12 presents the proportion of road casualties in different severity group by main road user type and age group.

- Of road casualties who were admitted to hospital, children (aged 0-15 years) were more likely to have minor overall injuries (MAIS 1) compared to other ages for all user groups shown (Chart 13). This may be because children are more likely to be admitted to hospital as a precaution.
- Similar to all ages combined, injured children were most likely to have minor injuries (42 per cent) as car occupants, and most likely to have a MAIS of three or higher as motorcycle users.
- Generally, injured casualties over 65 have a higher likelihood of sustaining graver injuries (MAIS 2 /3+) compared to other age groups. This may be because they are generally more vulnerable to the hazards associated road accidents. The exception was for motorcycle users, where the risk of serious injuries (MAIS 3 or higher) decreased with increasing age.

Chart 12: Proportion of road casualties in different MAIS group by main road user type and age group, linked STATS19 and HES data: England 1999-2009



Age of cars and injury severity

Cars have generally become safer over time due to increased use of modern technology, which may prevent road accidents, but also provide better protection against injuries should an accident occur. Therefore, the severity of injuries of car occupants by age of cars was investigated further.

In the following analysis, the age of car was based on the age in 2010. In addition, the analysis was limited to car occupant casualties who were in cars with a known age (84 per cent of all car occupant casualties). For further details please see Annex C

Table 13 presents the severity of the injuries sustained by car occupants in cars of different ages that were involved in road accidents and were matched to hospital data.

- The proportion of car occupants with minor injuries was higher in the newest cars, suggesting less severe injuries for occupants of newer cars. There were more pronounced differences between car aged ten years or older and newer cars. For example the proportion of MAIS 1 injuries was 34 per cent for occupants of cars aged 1-4 years, and 29 per cent for occupants of cars aged 10 years or older.
- It may be possible that the age of car is a measure of other important factors in injury severity rather than improved technology. For example, older cars may have developed more technical faults due to age or be driven on different types of roads, which may also affect the severity of occupant injuries once involved in road accidents. In addition, the driver demographics (e.g. age, sex or socioeconomic backgrounds) may vary between cars of different ages and these different demographics may affect injury severity through driver behaviour and/or other factors.

Table 13: Age of cars by MAIS group of car occupants in the linked STATS19 and HES data: England 1999-2009
(RAS web table RAS55001)

MAIS code	Number/percentage							
	Car ¹ ages ²							
	1-4 years		5-9 years		10-14 years		15 years or older	
	number	per cent	number	per cent	number	per cent	number	per cent
1	1,082	34	4,788	31	7,031	29	7,837	29
2	937	29	4,977	32	8,282	35	9,765	36
3+	354	11	2,101	14	3,493	15	4,009	15
Unknown/uncoded	814	26	3,617	23	5,079	21	5,425	20
Total	3,187	100	15,483	100	23,885	100	27,036	100

1 Includes cars that were fully or probably matched to the DVLA data with a non-missing manufacture year.

2 The age of car in 2010 based on the manufacture year of vehicle.

Part 3: Admissions for non-road traffic accidents

Information on hospital admissions resulting from non-traffic accidents are also recorded in HES. While these accidents are outside the scope of STATS19, they may still be of interest when considering road safety issues. The number of emergency admissions for falls in the street, cyclists in non-traffic accidents and animal riders/occupants of animal drawn vehicles in England in 2010 is shown in Table 14.

- Pedestrians injured in accidents involving a vehicle on the public highway (including footways) are included in STATS19, but pedestrian falls not involving a vehicle are not collected. In 2010 there were over 30 thousand emergency admissions to hospital for falls on the street or highway (Table 14). Of these hospital admissions, over half were to individuals aged 65 or older. This particular age group had more female hospital admissions compared to male admissions, in contrast to other age groups.
- Over 6,400 cyclists were admitted to hospital in 2010 after being injured in a non-traffic accident. Men accounted for 81 per cent of these admissions and just over half were aged under 16 (Table 14).
- In HES, it is not possible to identify whether an animal rider or occupant of an animal drawn vehicle admitted to hospital was injured in a road traffic accident. It is likely the majority of these accidents occurred off public highways. Therefore they were excluded from the figures in the rest of this article when comparing HES road traffic accident admissions with STATS19 casualties. There were around 3,500 such admissions in 2010, of which 85 per cent were female. The type of animal was not recorded but it seems likely that these will mostly be horses.

Table 14: Emergency admissions¹ for falls in the street, cyclists in non-traffic accidents and animal riders or occupants of animal drawn vehicles: HES 2010 (RAS web table RAS55001)

Age group	Gender	Falls on the street/highway ²		Cyclist casualties in non-traffic accidents		Animal riders or occupants of animal drawn vehicles	
		Number	Per cent	Number	Per cent	Number	Per cent
0-15 years	Male	740	2	2,695	42	57	2
	Female	442	1	684	11	652	19
	Total ³	1,182	4	3,379	52	709	21
16-64 years	Male	7,779	25	2,331	36	425	12
	Female	5,490	18	460	7	2,180	64
	Total ³	13,270	43	2,791	43	2,605	76
65+ years	Male	6,190	20	202	3	44	1
	Female	9,865	32	91	1	63	2
	Total ³	16,055	53	293	5	107	3
All ages ⁴	Male	14,743	48	5,229	81	528	15
	Female	15,806	52	1,235	19	2,895	85
	Total ³	30,550	100	6,464	100	3,423	100

1 The figures in this table include casualties who died in hospital as well as those discharged alive.

2 These figures may be under-recorded since the location was unknown in 28 per cent of falls.

3 includes cases where gender was not recorded

4 Includes cases where age was not recorded.

Annex A: HES data used in this article

All HES figures in this article relate to hospital *inpatients*. Inpatients are defined as patients who are admitted to hospital and occupy a bed, including both admissions where an overnight stay is planned and day cases. Those who attend A&E only are not included.

The main unit of recording in HES is the *finished consultant episode* (a period of admitted patient care under one consultant within one healthcare provider). This is not always the same as a single stay (spell) in hospital, because a patient may be transferred from one consultant to another during their stay. In these cases, there will be two or more episode records for the spell of treatment.

A *finished admission episode* is the first period of in-patient care within a spell in hospital. Finished admissions episodes are usually counted against the year in which the episode finishes, but in this analysis we have used date of admission to count them against the year in which they started. Please note that admissions do not represent the number of inpatients, as a person may have more than one admission within one year, although this is likely to have a minimal effect on the overall patterns for road casualty admissions.

This article looks at trends up to 2010. 2010/11 financial year data are provisional and may have been collected before complete data could be provided by the NHS. Counts produced from them are likely to be lower than those generated for the same period in the final dataset, although any shortfalls will be most pronounced in the final two months of the period (February and March 2011) which are not included in this article. There may also be a variety of errors due to coding inconsistencies that have not yet been investigated and corrected.

In Part 1 and Part 3 of this article, the HES figures represent counts of finished admission episodes that were emergency (rather than elective) admissions. Also, episodes relating to individuals dying in hospital have not been included in the analysis in Part 1, in order to give the closest possible comparison with the STATS19 seriously injured category. Figures are based on the calendar year in which a casualty was admitted.

In terms of road casualties, the coding of injury is likely to be more accurate in HES than in STATS19, but coding of location is likely to be less accurate meaning some off-road incidents may be recorded as traffic accidents, or, to a lesser extent, vice versa.

Acknowledgement

We are grateful to the Health and Social Care Information Centre for allowing us to access the HES system. Copyright © 2011, re-used with the permission of The Health and Social Care Information Centre. All rights reserved.

Data supplied by

The central, authoritative source of
health and social care information



Annex B: Limitations of MAIS used in the linked dataset

Severity of injury is known to be prone to misclassification in STATS19 due to the difficulties of such assessment by non experts at the scene of the accident. In addition, the serious injury definition in STATS19 includes all admissions to hospitals, which may include injuries on a scale of seriousness. The linked dataset was used to further explore severity of injuries.

An enhanced file was created to supplement the data from STATS19 and HES linked dataset. This includes the Maximum Abbreviated Injury Scale value (MAIS), and the length of stay in hospital which may be used to assess the severity of injuries sustained.

The Abbreviated Injury Scale (AIS)⁶ is an internationally recognised method of measuring injury severity, used in crash investigations. AIS takes account of threat to life as well as permanent impairment. The body is divided into six regions, and an AIS assigned to each region. The scale runs from 0 to 6, which signifies no injury through to maximum injury (Table 15). The maximum of the AIS scores assigned is the Maximum Abbreviated Injury Scale (MAIS) score used to summarise the overall injury.

For the linked STATS19 and HES data, AIS scores using the 1998 revision, were estimated from ICD-10 coding of injury diagnoses using the mapping developed at the University of Navarra for the Apollo project⁷.

Table 15: Abbreviated Injury Scale (AIS)

AIS code	Injury severity
AIS 0	No injury
AIS 1	Minor injury
AIS 2	Moderate injury
AIS 3	Serious injury
AIS 4	Severe injury
AIS 5	Critical injury
AIS 6	Maximum injury

Limitations of the AIS include its lack of ability to predict mortality or outcomes, and it is not a true scale (for example the difference between AIS 1 and AIS 2 is not the same as between AIS 4 and AIS 5). In addition, not all S and T codes of ICD-10 are assigned an AIS score using the mapping method developed for the Apollo project.

Limitations within the linked dataset include the lack of S or T code diagnosis for a small percentage of road traffic hospital admissions. Further, for largely practical reasons, the assignment of MAIS was based on the first six diagnoses out of the 20 codes recorded in HES. However, only around one per cent of total records have more than six diagnoses codes.

It is likely the combined effect of the above factors may underestimate the injury severity in the linked dataset.

While there are some limitations to the derived MAIS, this measure of injury severity is considered to be less affected by hospital admissions practices than the length of hospital stay. Therefore the article focuses on the MAIS as measure of severity in the linked dataset.

⁶ <http://www.aaam1.org/ais/>

⁷ European Center for Injury Prevention, University of Navarra, Algorithm to transform ICD-10 codes into AIS 90 (98 update)

Annex C: Car occupant casualties included in the age of cars analysis

Of the 83,331 car occupant casualties included in the linked dataset, 69,591 (84%) were in cars which were matched to the Driver and Vehicle Licensing Agency's (DVLA) vehicle registration dataset and had a non missing car manufacture year. The age of cars was based on the car age in 2010, and the year of car manufacture was used for this calculation.

The following analysis focuses on these 69,591 casualties only. It is possible that the patterns of injury may be different for casualties in cars with missing data, which are not included in this analysis.

Background notes

Detailed statistics (tables and charts) on "Hospital admissions data on road casualties" can be found on Reported Road Casualties in Great Britain – 2010 annual report web page at:

<http://assets.dft.gov.uk/statistics/tables/ras55001.xls>

Table number RAS55001

1. Further information about the Reported Road Casualties Great Britain Annual Report can be found at: <http://www.dft.gov.uk/statistics/releases/road-accidents-and-safety-annual-report-2010>
2. Notes & Definitions used in STATS19 can be found at: <http://assets.dft.gov.uk/statistics/releases/reported-road-casualties-gb-main-results-2010/reported-road-casualties-gb-main-results-2010-definitions.pdf>
3. Further information about the Hospital Admissions Statistics can be found at: <http://www.hesonline.nhs.uk>
4. Please contact roadacc.stats@dft.gsi.gov.uk for details of the linkage methodology used in for the linking of STATS19 and HES data or to request extracts of the matched data.