



GT50/121/0005

**ROAD TRAFFIC REGULATION ACT 1984 – SECTIONS 64 AND 65  
AUTHORISATION OF TRAFFIC SIGNS AND SPECIAL DIRECTIONS**

The Secretary of State for Transport, in exercise of his powers under Sections 64 and 65 of the Road Traffic Regulation Act 1984, and of all other powers enabling him in that behalf, for the purpose of controlling traffic flow at Junction 17 A1(M), Peterborough, hereby:-

1. authorises the erection at or within 2 metres of the sites marked with a blue cross in the attached set of plans numbered GT50/121/0005-1 of a light signal (hereinafter referred to as “the authorised light signal”) conforming as to size, colour and character with the light signal to diagram 3000 in Schedule 8 to the Traffic Signs Regulations 2002 (Part I of SI 2002/3113, “the 2002 Regulations”), save that the height from the footway to the centre of the amber signal shall be 5.5 metres; and
2. directs that the authorised light signal may only be placed at the said site if the apparatus (including the content of all instructions stored in it) used in connection with it is of a type which has been approved by the Secretary of State as appropriate to the site and application; and
3. directs, without prejudice to any statutory provision to the like effect, that it is a condition of this authorisation that the erection of the authorised light signal at or near the said site shall continue to have effect only until such day as may be appointed by one month’s notice given by the Secretary of State in writing to the traffic authority for the removal or alteration of the authorised light signal and on that day the said authorisation shall, without prejudice to the giving of any further authorisation or direction, cease to have effect.

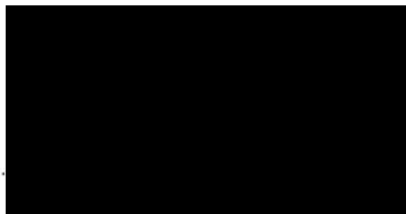


GT50/121/0005

The provisions of Regulations 12 and 33 of the 2002 Regulations shall apply to the authorised light signal in the same manner as they apply to the light signal to diagram 3000 in Schedule 8 to those Regulations.

Dated 5 October 2011

Signed by authority of the Secretary of State



A Delegated Official of the Department for Transport

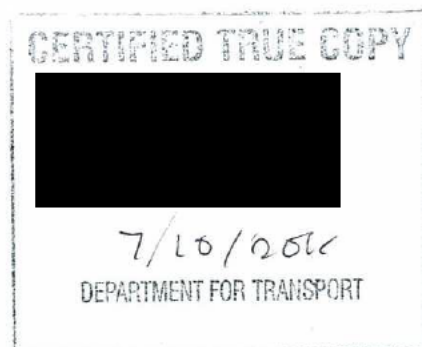
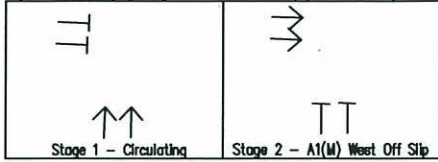


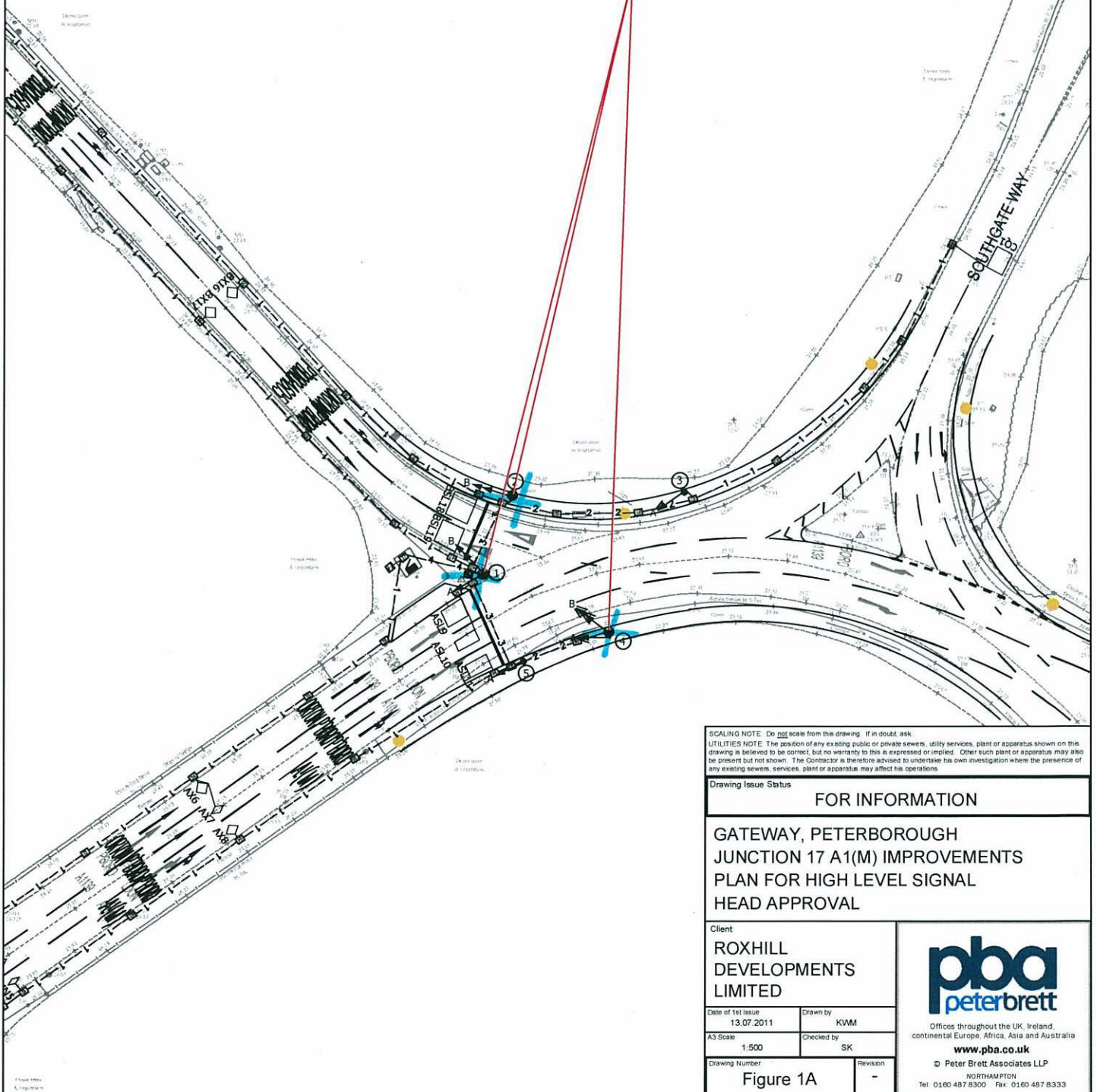
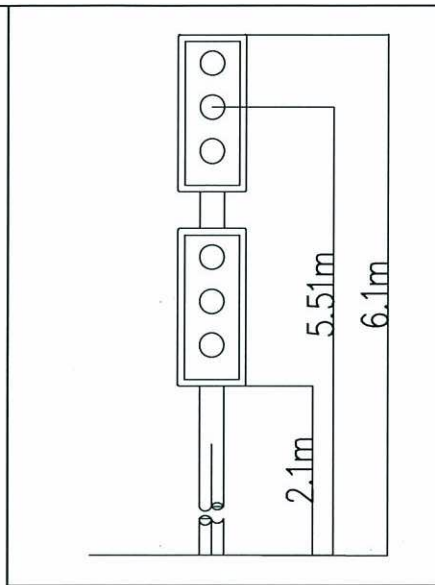
Figure 1A - Staging Diagram Junction 17 A1(M) West Off Slip



Department for Transport

Date 5/10/11

No. GT50/121/0005-1



SCALING NOTE: Do not scale from this drawing. If in doubt, ask.

UTILITIES NOTE: The position of any existing public or private sewers, utility services, plant or apparatus shown on this drawing is believed to be correct, but no warranty to this is expressed or implied. Other such plant or apparatus may also be present but not shown. The Contractor is therefore advised to undertake his own investigation where the presence of any existing sewers, services, plant or apparatus may affect his operations.

Drawing Issue Status		FOR INFORMATION
GATEWAY, PETERBOROUGH JUNCTION 17 A1(M) IMPROVEMENTS PLAN FOR HIGH LEVEL SIGNAL HEAD APPROVAL		
Client ROXHILL DEVELOPMENTS LIMITED		
Date of 1st Issue 13.07.2011	Drawn by KWM	
A3 Scale 1:500	Checked by SK	
Drawing Number Figure 1A	Revision -	

**pba**  
peterbrett

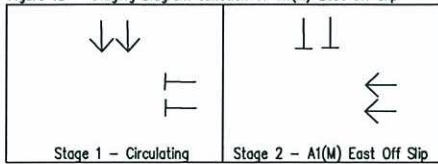
Offices throughout the UK, Ireland,  
continental Europe, Africa, Asia and Australia

[www.pba.co.uk](http://www.pba.co.uk)

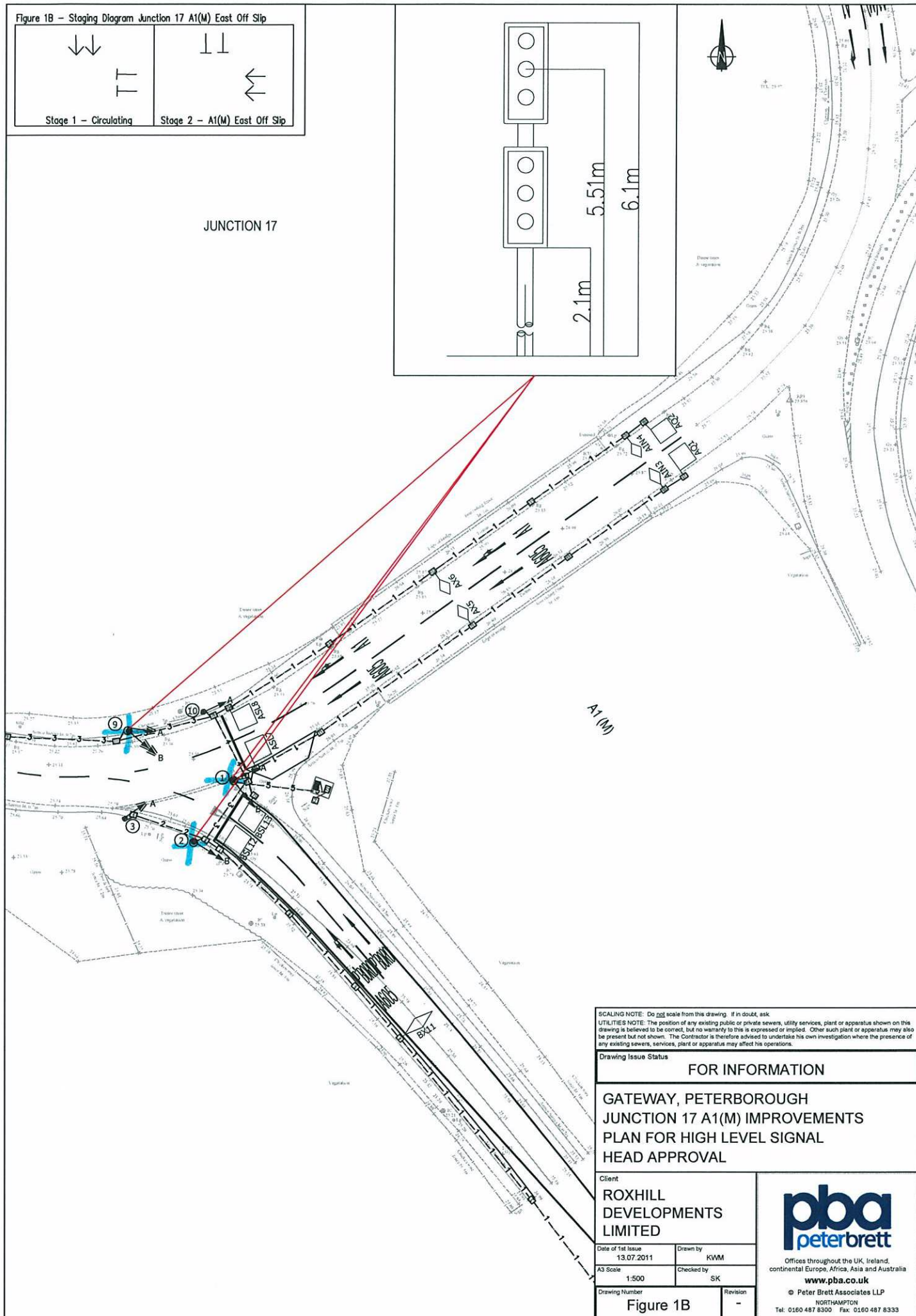
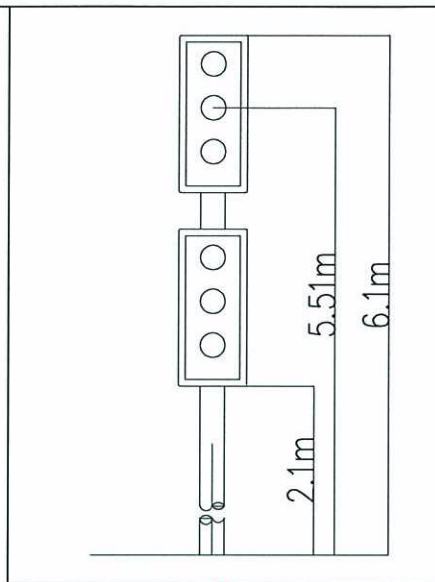
© Peter Brett Associates LLP

NORTHAMPTON  
Tel: 01600 487 8300 Fax: 01600 487 8333

Figure 1B - Staging Diagram Junction 17 A1(M) East Off Slip



JUNCTION 17



SCALING NOTE: Do not scale from this drawing. If in doubt, ask.  
 UTILITIES NOTE: The position of any existing public or private sewers, utility services, plant or apparatus shown on this drawing is believed to be correct, but no warranty to this is expressed or implied. Other such plant or apparatus may also be present but not shown. The Contractor is therefore advised to undertake his own investigation where the presence of any existing sewers, services, plant or apparatus may affect his operations.

Drawing Issue Status

FOR INFORMATION

GATEWAY, PETERBOROUGH  
 JUNCTION 17 A1(M) IMPROVEMENTS  
 PLAN FOR HIGH LEVEL SIGNAL  
 HEAD APPROVAL

Client  
 ROXHILL  
 DEVELOPMENTS  
 LIMITED

Date of 1st Issue  
 13.07.2011  
 Drawn by  
 KWM  
 A3 Scale  
 1:500  
 Checked by  
 SK  
 Drawing Number  
 Figure 1B  
 Revision  
 -



Offices throughout the UK, Ireland,  
 continental Europe, Africa, Asia and Australia  
[www.pba.co.uk](http://www.pba.co.uk)  
 © Peter Brett Associates LLP  
 NORTHAMPTON  
 Tel: 0160 487 8300 Fax: 0160 487 8333



Figure 1A

Figure 1B

SCALING NOTE: Do not scale from this drawing. If in doubt, ask.  
UTILITIES NOTE: The position of any existing public or private sewers, utility services, plant or apparatus shown on this drawing is believed to be correct, but no warranty to this is expressed or implied. Other such plant or apparatus may also be present but not shown. The Contractor is therefore advised to undertake his own investigation where the presence of any existing sewers, services, plant or apparatus may affect his operations.

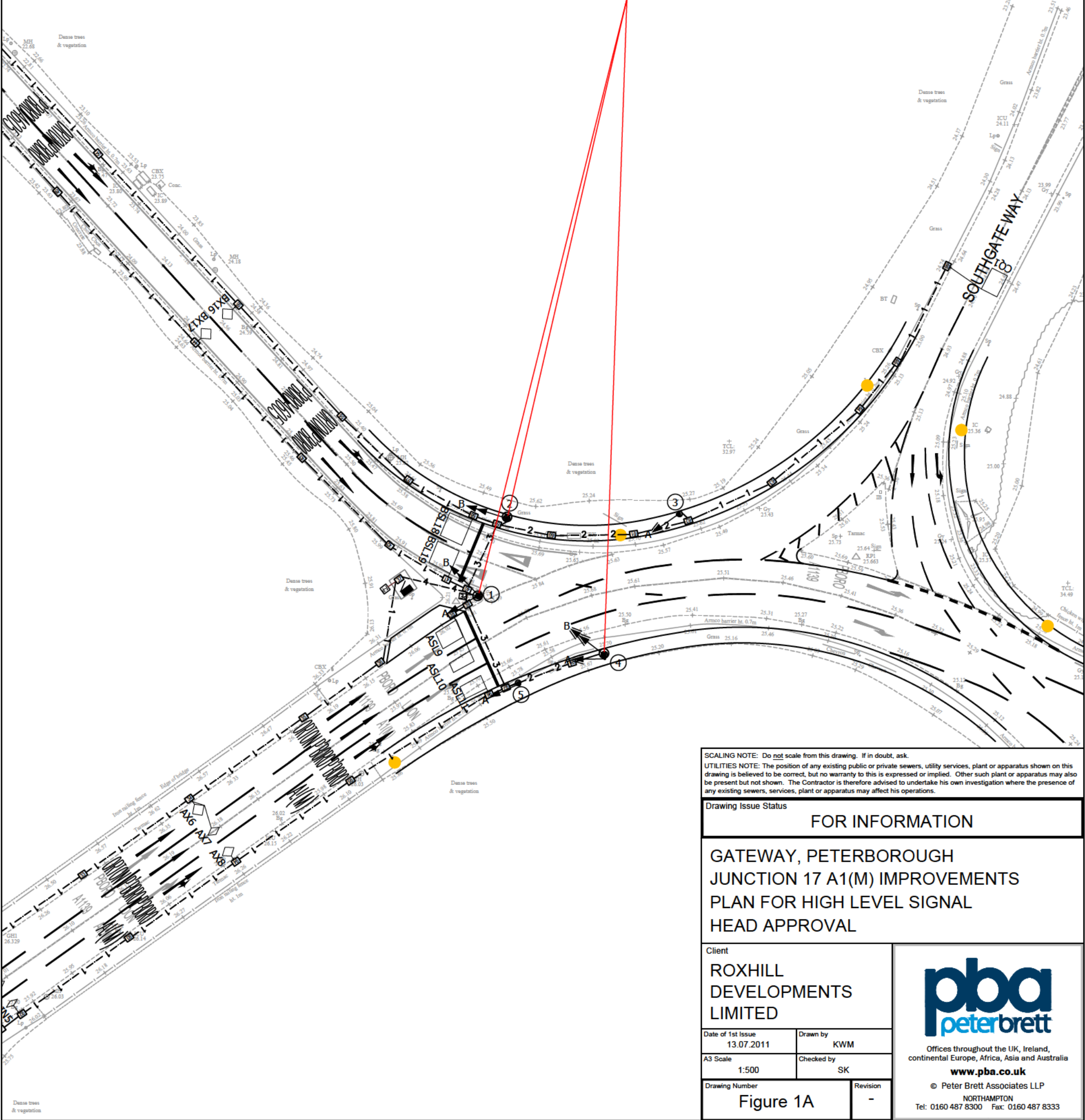
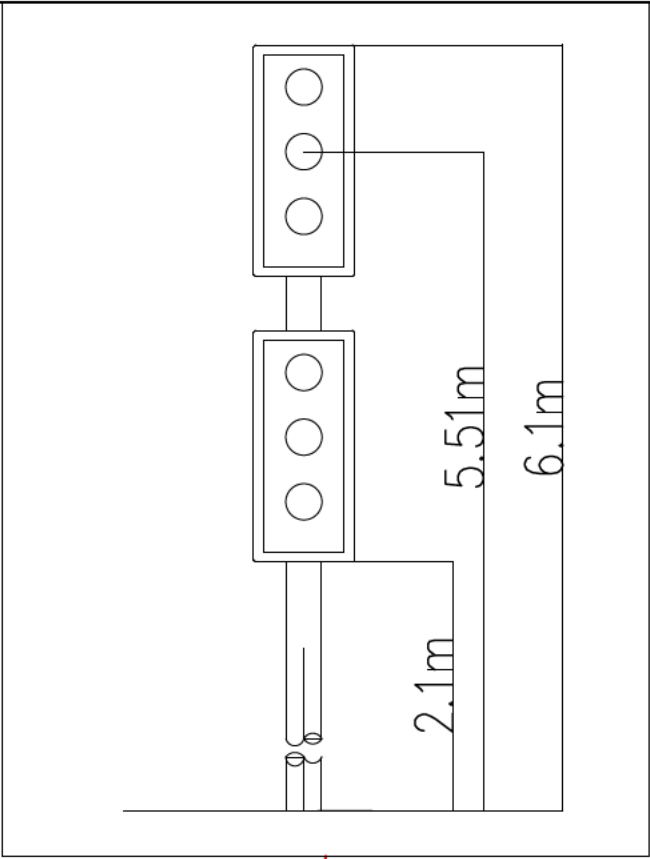
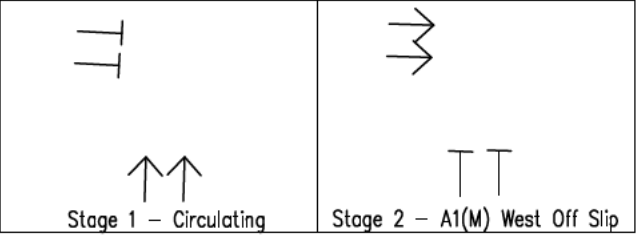
Drawing Issue Status

FOR INFORMATION
-----------------

GATEWAY, PETERBOROUGH  
JUNCTION 17 A1(M) IMPROVEMENTS  
OVERVIEW PLAN FOR HIGH LEVEL  
SIGNAL HEAD APPROVAL

Client <b>ROXHILL DEVELOPMENTS LIMITED</b>		 Offices throughout the UK, Ireland, continental Europe, Africa, Asia and Australia <b>www.pba.co.uk</b> © Peter Brett Associates LLP NORTHAMPTON Tel: 0160 487 8300 Fax: 0160 487 8333
Date of 1st Issue 13.07.2011	Drawn by KVM	
A3 Scale 1:1000	Checked by SK	
Drawing Number <b>Figure 1</b>	Revision -	

Figure 1A – Staging Diagram Junction 17 A1(M) West Off Slip





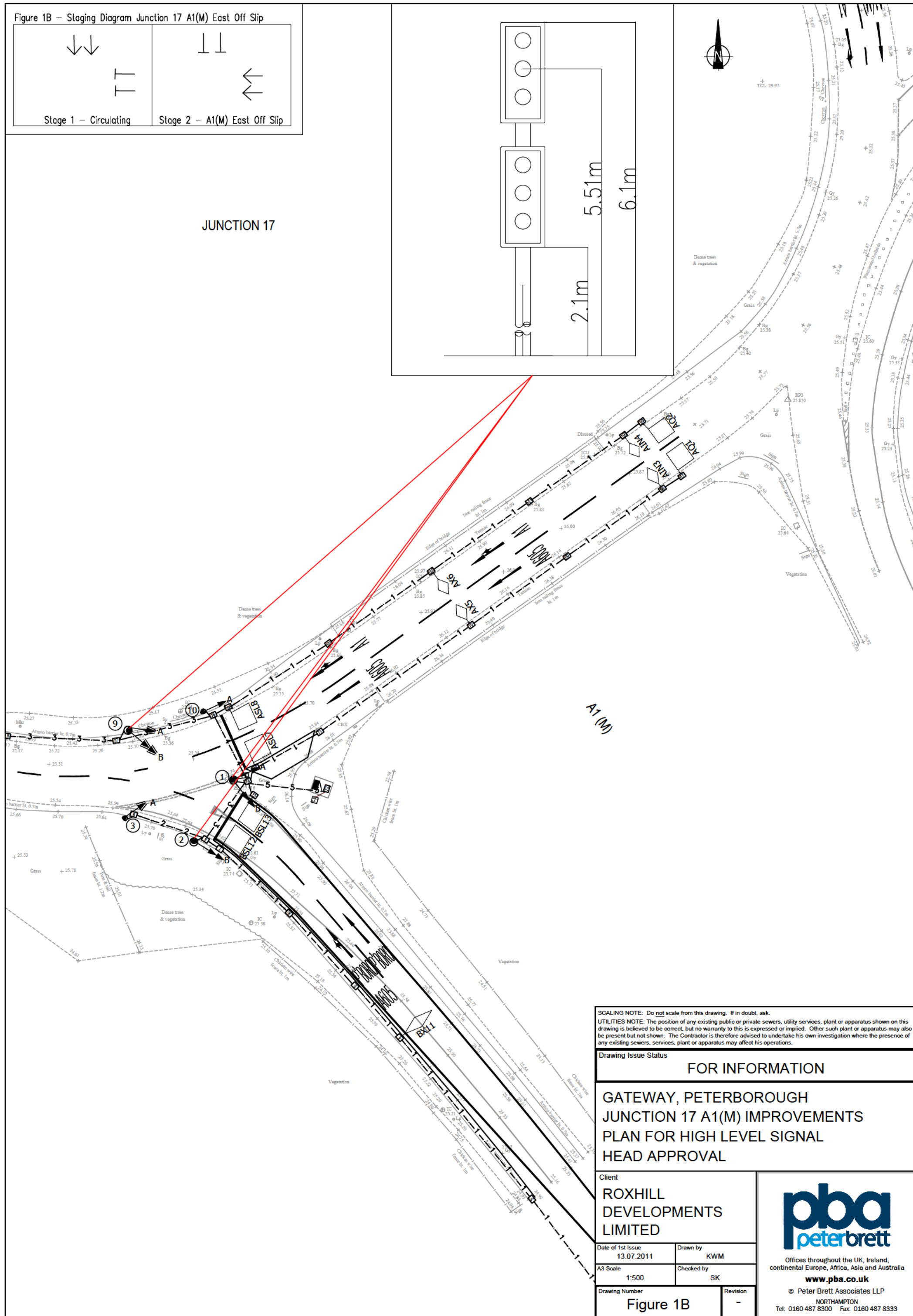
 <p>Stage 1 – Circulating</p>	 <p>Stage 2 – A1(M) East Off Slip</p>
--	--

Diagram illustrating the dimensions of a building facade. The building is 6.1m wide and 2.1m high. The first floor has a window 5.51m wide. The second floor has a window 5.51m wide. The total height of the building is 6.1m.




UTILITIES NOTE: The position of any existing public or private sewers, utility services, plant or apparatus shown on this drawing is believed to be correct, but no warranty to this is expressed or implied. Other such plant or apparatus may also be present but not shown. The Contractor is therefore advised to undertake his own investigation where the presence of any existing sewers, services, plant or apparatus may affect his operations.

Drawing Issue Status

FOR INFORMATION

# GATEWAY, PETERBOROUGH JUNCTION 17 A1(M) IMPROVEMENTS PLAN FOR HIGH LEVEL SIGNAL HEAD APPROVAL

Client	
ROXHILL DEVELOPMENTS LIMITED	

Date of 1st Issue 13.07.2011	Drawn by KWM
A3 Scale 1:500	Checked by SK

**peterbrett**

Offices throughout the UK, Ireland,  
continental Europe, Africa, Asia and Australia

**www.pba.co.uk**

Drawing Number	Revision	© Peter Brett Associates LLP NORTHAMPTON Tel: 0160 487 8300 Fax: 0160 487 8333
Figure 1B	-	

**pba**  
peterbrett

Offices throughout the UK, Ireland,  
continental Europe, Africa, Asia and Australia  
**[www.pba.co.uk](http://www.pba.co.uk)**

© Peter Brett Associates LLP

NORTHAMPTON  
Tel: 0160 487 8300 Fax: 0160 487 8333



Figure 1A

Figure 1B

JUNCTION 17

A1(M)

SCALING NOTE: Do not scale from this drawing. If in doubt, ask.  
UTILITIES NOTE: The position of any existing public or private sewers, utility services, plant or apparatus shown on this drawing is believed to be correct, but no warranty to this is expressed or implied. Other such plant or apparatus may also be present but not shown. The Contractor is therefore advised to undertake his own investigation where the presence of any existing sewers, services, plant or apparatus may affect his operations.

Drawing Issue Status

FOR INFORMATION

GATEWAY, PETERBOROUGH  
JUNCTION 17 A1(M) IMPROVEMENTS  
OVERVIEW PLAN FOR HIGH LEVEL  
SIGNAL HEAD APPROVAL

Client

ROXHILL  
DEVELOPMENTS  
LIMITED

Date of 1st Issue

13.07.2011

Drawn by

KWM

A3 Scale

1:1000

Checked by

SK

Drawing Number

Figure 1

Revision

-

**pba**  
peterbrett

Offices throughout the UK, Ireland,  
continental Europe, Africa, Asia and Australia

[www.pba.co.uk](http://www.pba.co.uk)

© Peter Brett Associates LLP  
NORTHAMPTON  
Tel: 0160 487 8300 Fax: 0160 487 8333