



GT50/075/0014

**ROAD TRAFFIC REGULATION ACT 1984 – SECTIONS 64 AND 65  
AUTHORISATION OF TRAFFIC SIGNS AND SPECIAL DIRECTIONS**

The Secretary of State for Transport, in exercise of his powers under Sections 64 and 65 of the Road Traffic Regulation Act 1984, and of all other powers enabling him in that behalf, for the purpose of informing road users of contra-flow cycling in Canfield Gardens, Kingsgate Place, Smyrna Road, Gascony Avenue, Messina Avenue, Sherriff Road, Greencroft Gardens, Broadhurst Gardens, Cleve Road, Priory Road and Fairhazel Gardens in the West Hampstead area of the London Borough of Camden hereby:-

1. authorises the erection at or within 5 metres of the sites marked with a red cross in the attached set of plans numbered GT50/075/0014-1 of a traffic sign (hereinafter referred to as “the authorised sign”) conforming as to size, colour and character with that shown on the attached drawing numbered NP 960.2; and
2. directs that, notwithstanding the provisions of Direction 21 of the Traffic Signs General Directions 2002 (Part II of SI 2002/3113, “the 2002 Directions”), a sign to diagram 616 in Schedule 2 to the Traffic Signs Regulations 2002 (Part I of SI 2002/3113, “the 2002 Regulations”) may be used in combination with a plate to diagram 954.4 in Schedule 5 to those Regulations, at or within 5 metres of the sites shown with a blue cross in the said set of plans; and
3. directs that, notwithstanding the provisions of Direction 18 of the 2002 Directions, the authorised sign may be used in conjunction with the road marking to diagram 1057 in Schedule 6 to the 2002 Regulations; and



GT50/075/0014

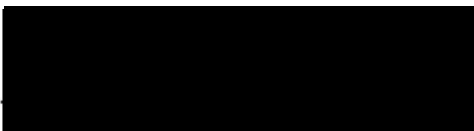
4. directs that it is a condition of this authorisation that the authorised sign may be placed only to indicate the effect of a corresponding Traffic Order; and
5. directs, without prejudice to any statutory provision to the like effect, that it is a condition of this authorisation that the erection of the authorised sign at or near the said sites shall continue to have effect only until such day as may be appointed by one month's notice given by the Secretary of State in writing to the traffic authority for the removal or alteration of the authorised sign and on that day the said authorisation shall, without prejudice to the giving of any further authorisation or direction, cease to have effect.

The provisions of Regulations 12, 18 and 19 of the 2002 Regulations shall apply to the authorised sign in the same manner as they apply to the sign to diagram 960.1 in Schedule 5 to those Regulations.

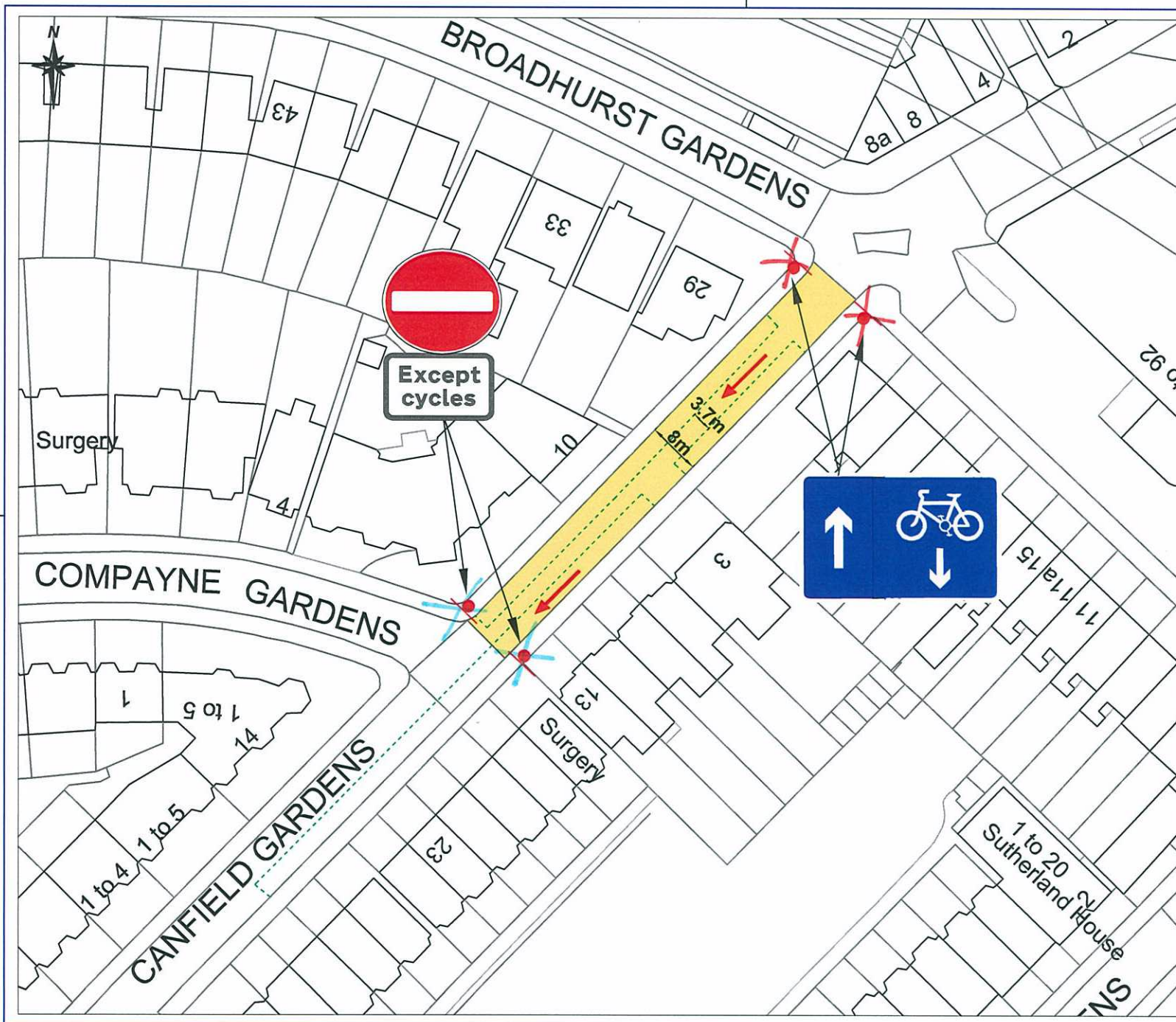
Dated 11 October 2011

Signed by authority of the Secretary of State



  
A Delegated Official of the Department for Transport





## Proposed signs

\*Note - Cycle mark logos will need to be implemented at 10m intervals along Canfield Gardens, with at least a 500mm gap between existing parking bays (as per design standard specifications).

Department for Transport	
Date	11/10/11
No.	GT50/75/0014-1

B	C.K.	14.07.11	Preliminary
Rev	By	Date	Amendments

 **Camden**  
 Engineering Service  
 London Borough of Camden  
 Town Hall, Argyle Street  
 London WC1H 8EQ  
 Tel 020 7278 4444, Fax 020 7974 6952  
 DX 2106 Euston, Minicom 020 7974 6886



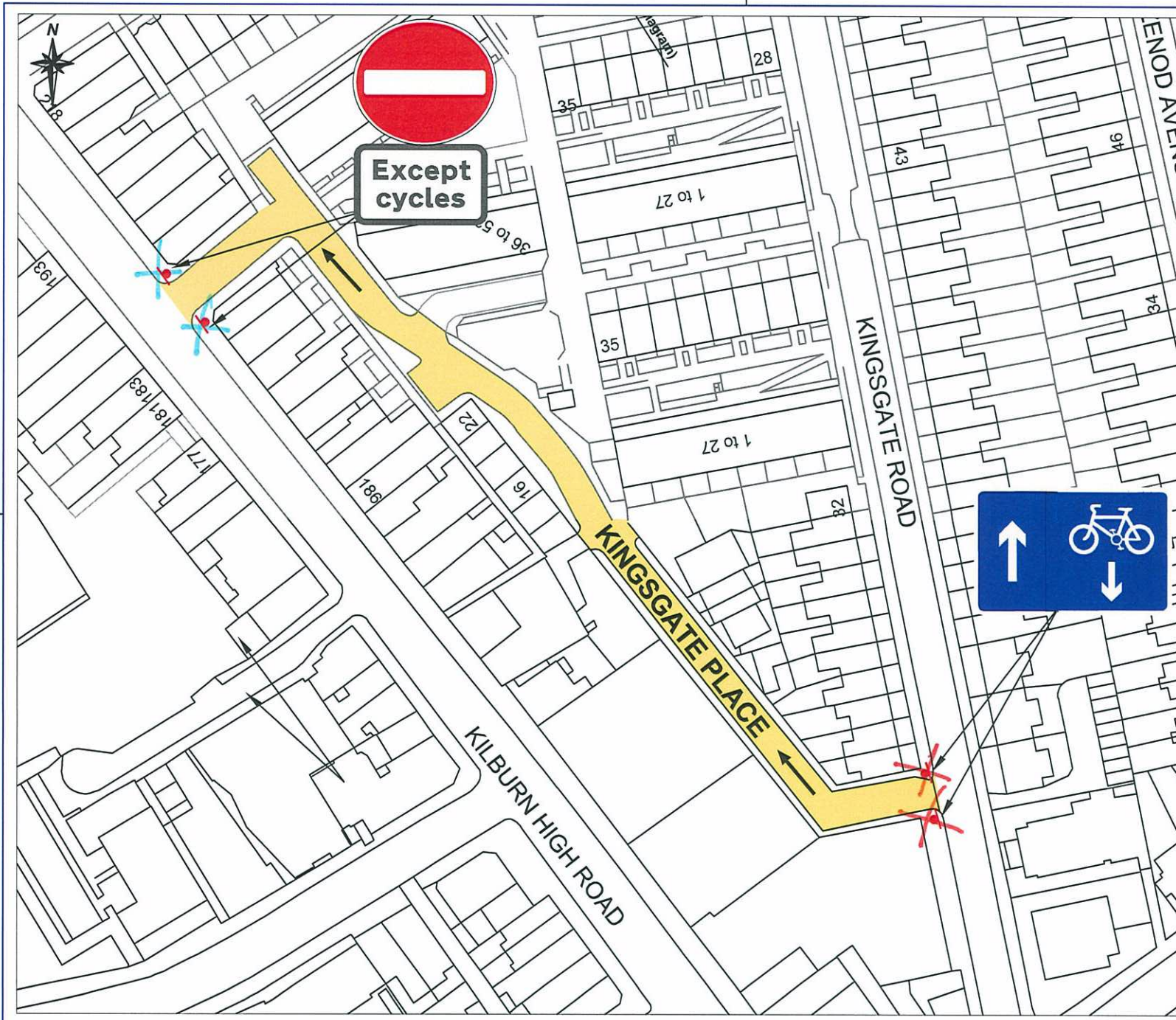
Project  
 West Hampstead Area  
 Feasibility Study

Drawing Title  
 Contra-flow Cycle System  
 Option E - Canfield Gardens

Scale	Date
NTS	May 2011
Drawn By	File Ref
C.K.	
Checked By	Dwg Name
S.S.	
Drawing Location	

Drawing Number	Rev.
	A





## Proposed signs

\*Note - Cycle mark logos will need to be implemented at 10m intervals along Canfield Gardens, with at least a 500mm gap between existing parking bays (as per design standard specifications).

Rev	By	Date	Amendments
A	C.K.	15.07.11	Preliminary



Engineering Service  
London Borough of Camden  
Town Hall, Argyle Street  
London WC1H 8EQ  
Tel 020 7278 4444, Fax 020 7974 6952  
DX 2106 Euston, Minicom 020 7974 6866



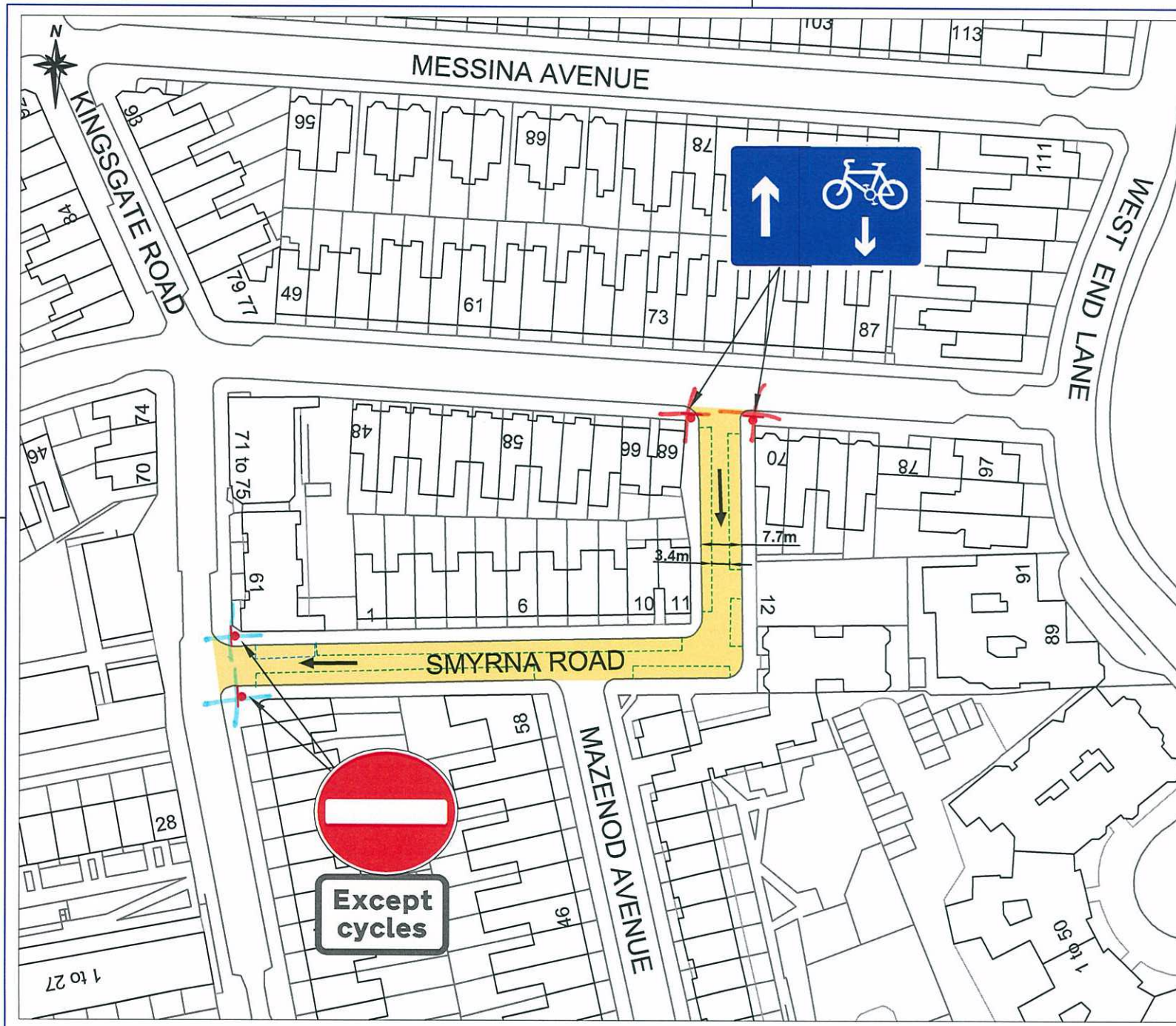
Project  
West Hampstead Area  
Feasibility Study

Drawing Title  
Contra-flow Cycle System  
Option N - Kingsgate Place

Scale NTS	Date July 2011
Drawn By C.K.	File Ref
Checked By S.S.	Dwg Name
Drawing Location	

Drawing Number	Rev. A
----------------	-----------





## Proposed signs

\*Note - Cycle mark logos will need to be implemented at 10m intervals along Canfield Gardens, with at least a 500mm gap between existing parking bays (as per design standard specifications).

Rev	By	Date	Amendments
A	C.K.	15.07.11	Preliminary



Engineering Service  
London Borough of Camden  
Town Hall, Argyle Street  
London WC1H 8EQ  
Tel 020 7278 4444, Fax 020 7974 6952  
DX 2106 Euston, Minicom 020 7974 6866



Project  
West Hampstead Area  
Feasibility Study

Drawing Title  
Contra-flow Cycle System  
Option M - Smyrna Road

Scale  
NTS

Drawn By  
C.K.

Checked By  
S.S.

Drawing Location

Drawing Number

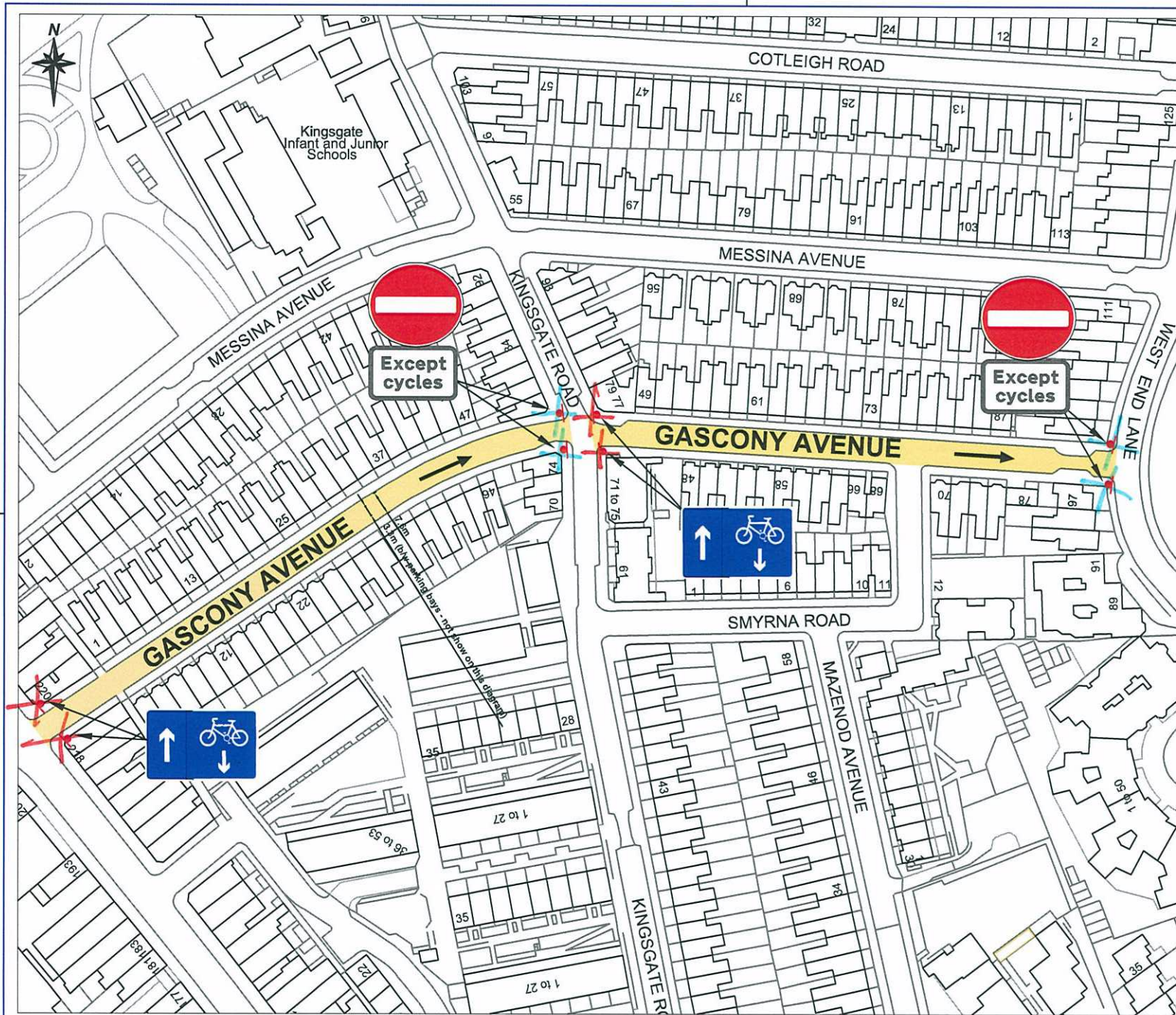
Date  
July 2011

File Ref

Dwg Name

Rev.  
A





## Proposed signs

\*Note - Cycle mark logos will need to be implemented at 10m intervals along Canfield Gardens, with at least a 500mm gap between existing parking bays (as per design standard specifications).

Rev	By	Date	Amendments
A	C.K.	15.07.11	Preliminary



Engineering Service  
London Borough of Camden  
Town Hall, Argyle Street  
London WC1H 8EQ  
Tel 020 7278 4444, Fax 020 7974 6952  
DX 2106 Euston, Minicom 020 7974 6866



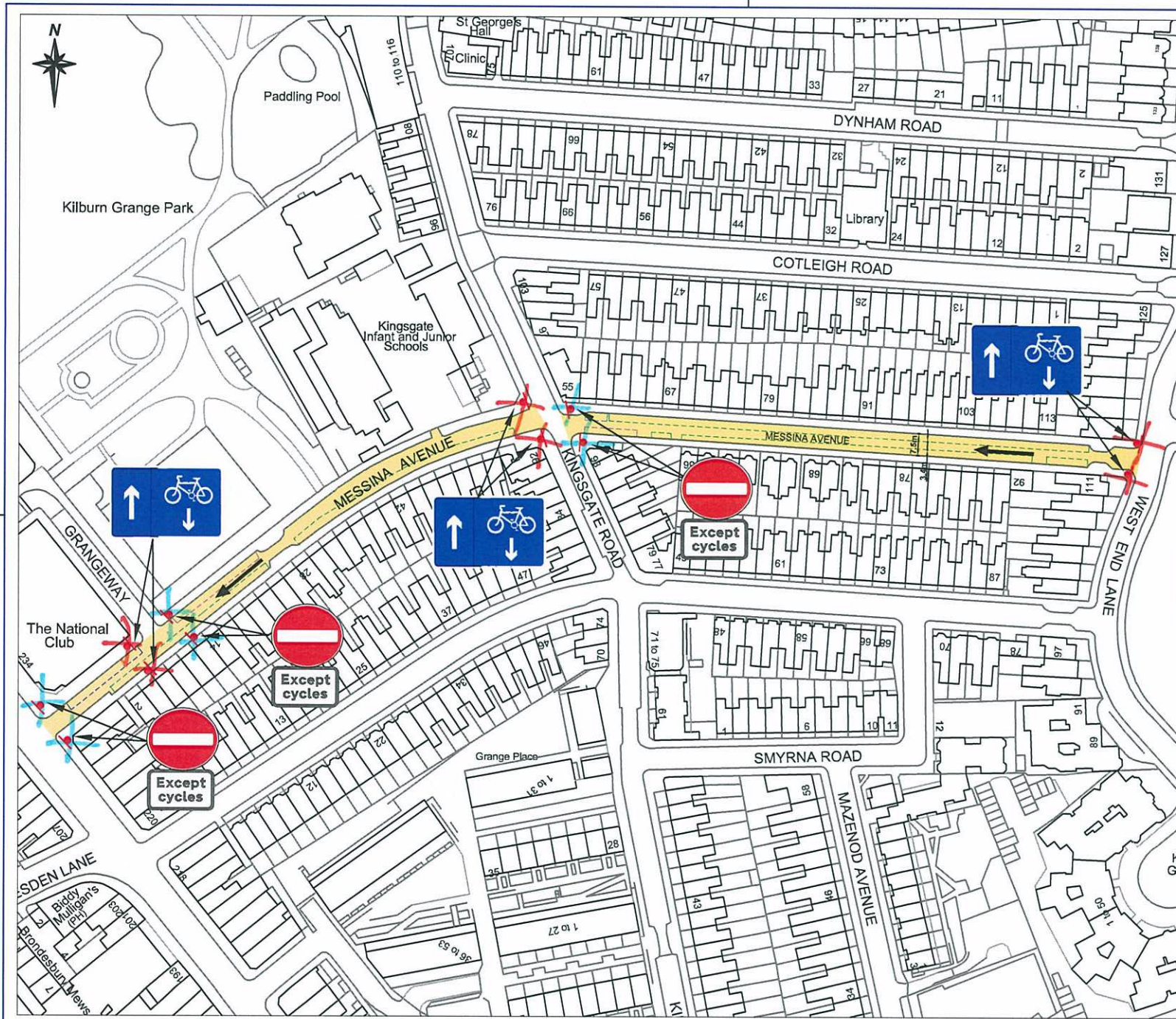
Project  
West Hampstead Area  
Feasibility Study

Drawing Title  
Contra-flow Cycle System  
Option L - Gascony Avenue

Scale NTS	Date July 2011
Drawn By C.K.	File Ref
Checked By S.S.	Dwg Name
Drawing Location	

Drawing Number	Rev. A
----------------	-----------





## Proposed signs

\*Note - Cycle mark logos will need to be implemented at 10m intervals along Canfield Gardens, with at least a 500mm gap between existing parking bays (as per design standard specifications).

Rev	By	Date	Amendments
A	C.K.	15.07.11	Preliminary



Engineering Service  
London Borough of Camden  
Town Hall, Argyle Street  
London WC1H 8EQ  
Tel 020 7278 4444, Fax 020 7974 6952  
DX 2106 Euston, Minicom 020 7974 6886



Awarded for excellence INVESTOR IN PEOPLE

Project  
**West Hampstead Area  
Feasibility Study**

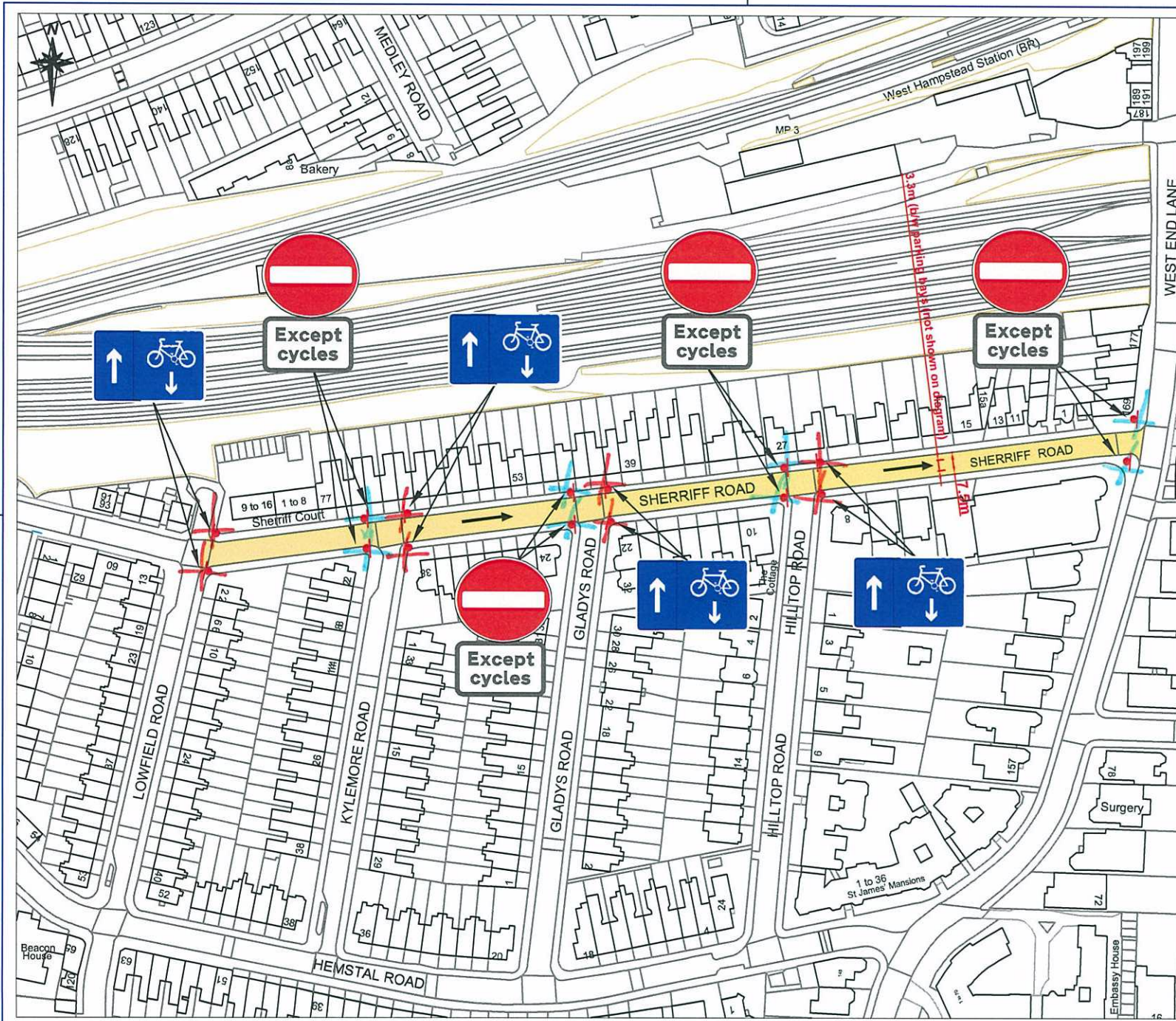
Drawing Title  
**Contra-flow Cycle System  
Option K - Messina Avenue**

Scale NTS	Date July 2011
Drawn By C.K.	File Ref
Checked By S.S.	Dwg Name
Drawing Location	

Drawing Number

Rev.  
**A**





## Proposed signs

\*Note - Cycle mark logos will need to be implemented at 10m intervals along Canfield Gardens, with at least a 500mm gap between existing parking bays (as per design standard specifications).

Rev	By	Date	Amendments
B	C.K.	14.07.11	Preliminary



Engineering Service  
London Borough of Camden  
Town Hall, Argyle Street  
London WC1H 8EQ  
Tel 020 7278 4444, Fax 020 7974 6952  
DX 2106 Euston, Minicom 020 7974 6866



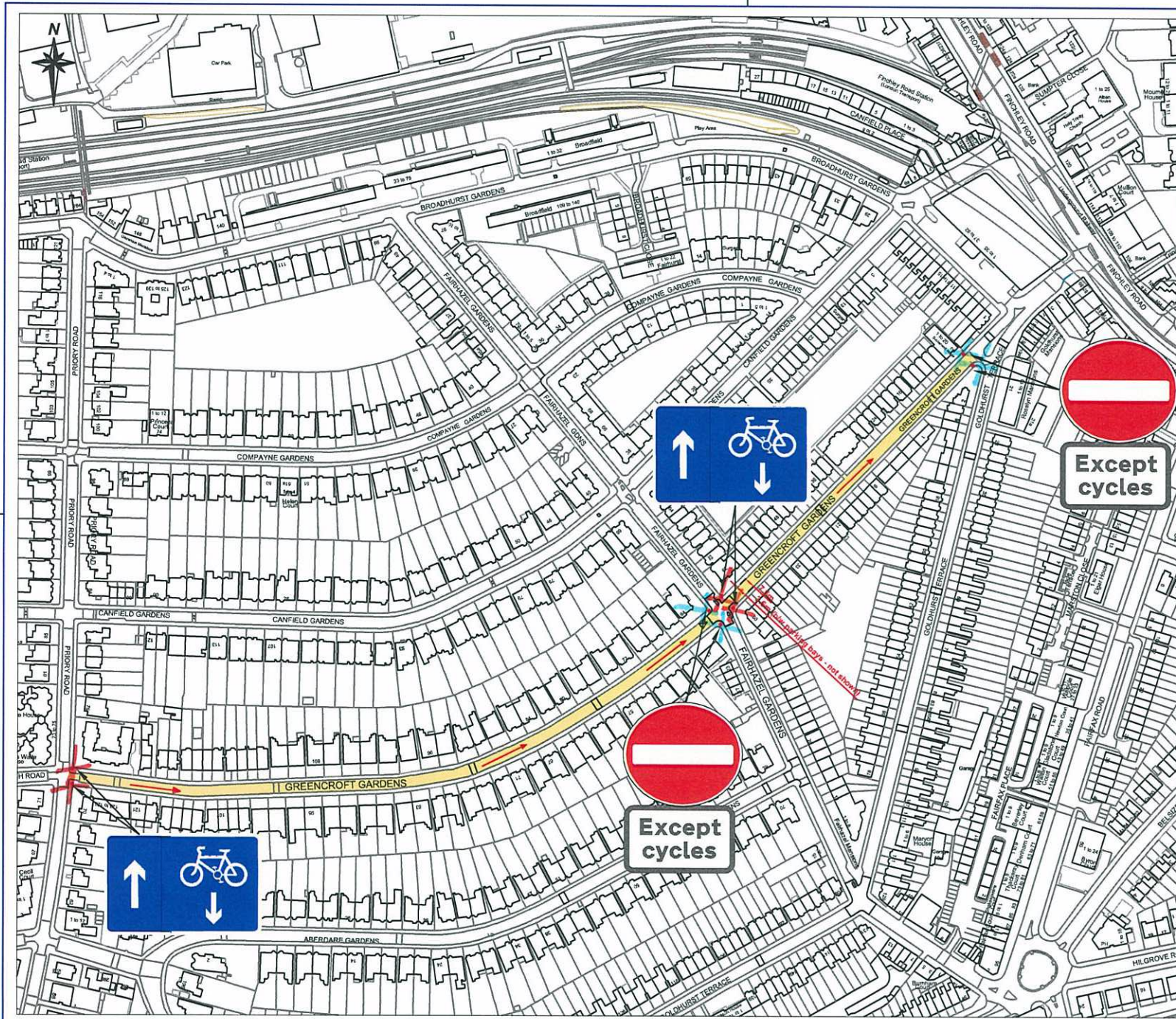
Project  
West Hampstead Area  
Feasibility Study

Drawing Title  
Contra-flow Cycle System  
Option J - Sherriff Road

Scale NTS	Date July 2011
Drawn By C.K.	File Ref
Checked By S.S.	Dwg Name
Drawing Location	

Drawing Number	Rev. A
----------------	-----------





## Proposed signs

\*Note - Cycle mark logos will need to be implemented at 10m intervals along Greencroft Gardens, with at least a 500mm gap between existing parking bays (as per design standard specifications).

Rev	By	Date	Amendments
A	C.K.	18.05.11	Preliminary



Engineering Service  
London Borough of Camden  
Town Hall, Argyle Street  
London WC1H 8EQ  
Tel 020 7278 4444, Fax 020 7974 6952  
DX 2106 Euston, Minicom 020 7974 6866



Awarded for excellence INVESTOR IN PEOPLE

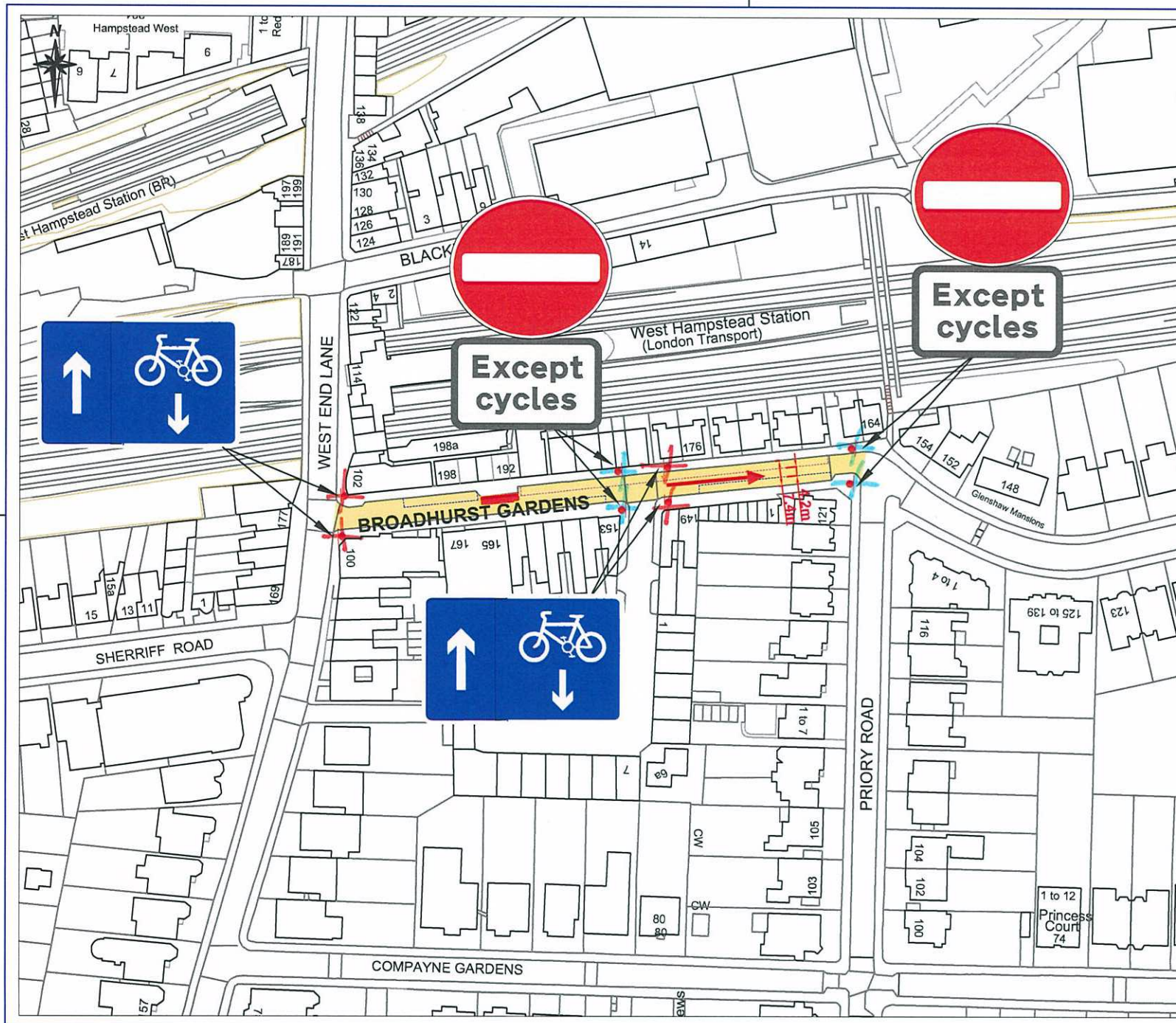
Project  
West Hampstead Area  
Feasibility Study

Drawing Title  
Contra-flow Cycle System  
Option F - Greencroft Gardens

Scale  
NTS  
Date  
May 2011  
Drawn By  
C.K.  
File Ref  
Checked By  
S.S.  
Dwg Name  
Drawing Location

Drawing Number  
Rev. A





## Proposed signs

\*Note - Cycle mark logos will need to be implemented at 10m intervals along Broadhurst Gardens, with at least a 500mm gap between existing parking bays (as per design standard specifications).

Rev	By	Date	Amendments
B	C.K.	14.07.11	Preliminary



Engineering Service  
London Borough of Camden  
Town Hall, Argyle Street  
London WC1H 8EQ  
Tel 020 7278 4444, Fax 020 7974 6952  
DX 2106 Euston, Minicom 020 7974 6866



Awarded for excellence INVESTOR IN PEOPLE

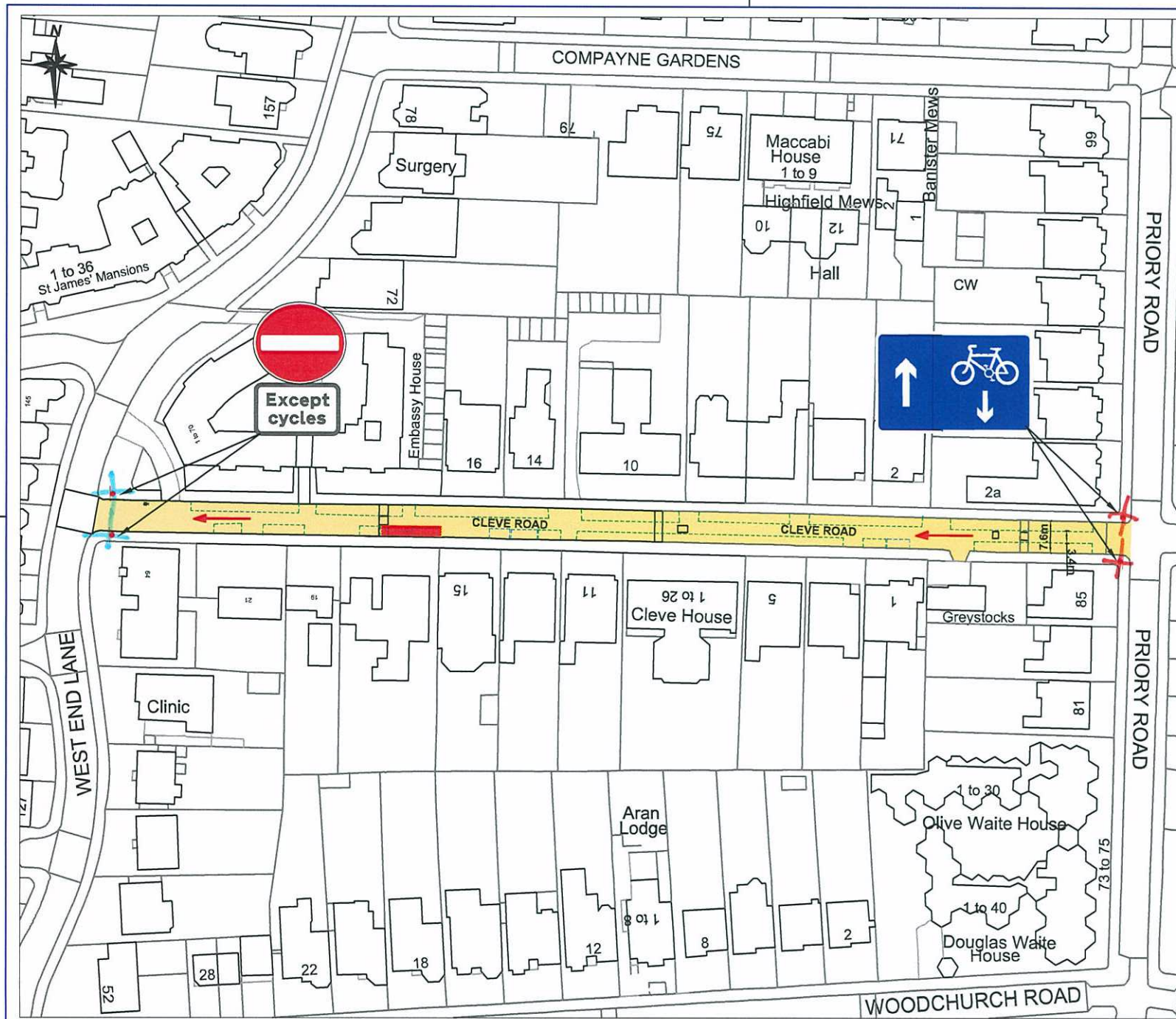
Project  
West Hampstead Area  
Feasibility Study

Drawing Title  
Contra-flow Cycle System  
Option G - Broadhurst Gardens

Scale NTS	Date May 2011
Drawn By C.K.	File Ref
Checked By S.S.	Dwg Name

Drawing Location	Drawing Number	Rev.
		A





## Proposed signs

\*Note - Cycle mark logos will need to be implemented at 10m intervals along Cleve Road, with at least a 500mm gap between existing parking bays (as per design standard specifications).

Rev	By	Date	Amendments
B	C.K.	14.07.11	Preliminary



Camden  
Engineering Service  
London Borough of Camden  
Town Hall, Argyle Street  
London WC1H 8EQ  
Tel 020 7278 4444, Fax 020 7974 6952  
DX 2106 Euston, Minicom 020 7974 6866



Project  
West Hampstead Area  
Feasibility Study

Drawing Title  
Contra-flow Cycle System  
Option D - Cleve Road

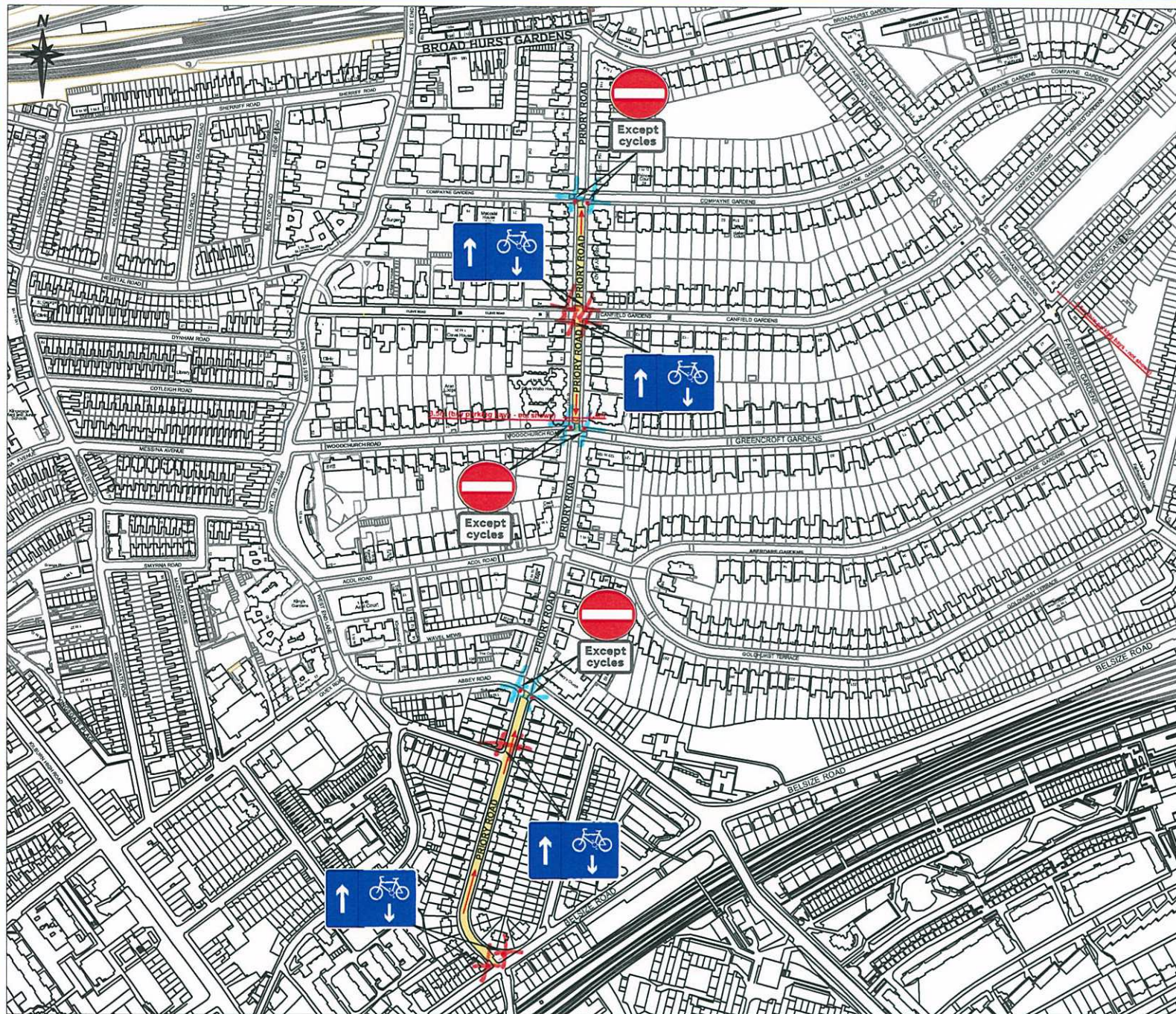
Scale  
NTS  
Date  
May 2011  
Drawn By  
C.K.  
File Ref  
Checked By  
S.S.  
Dwg Name

Drawing Location

Drawing Number

Rev.  
A





## Proposed signs

\*Note - Cycle mark logos will need to be implemented at 10m intervals along Priory Road, with at least a 500mm gap between existing parking bays (as per design standard specifications).

Rev	By	Date	Amendments
B	C.K.	14.07.11	Preliminary



Engineering Service  
London Borough of Camden  
Town Hall, Argyle Street  
London WC1H 8EQ  
Tel 020 7278 4444, Fax 020 7974 6952  
DX 2106 Euston, Minicom 020 7974 6866



Project  
West Hampstead Area  
Feasibility Study

Drawing Title  
Contra-flow Cycle System  
Option C - Priory Road

Scale  
NTS

Drawn By  
C.K.

Checked By  
S.S.

Drawing Location

Drawing Number

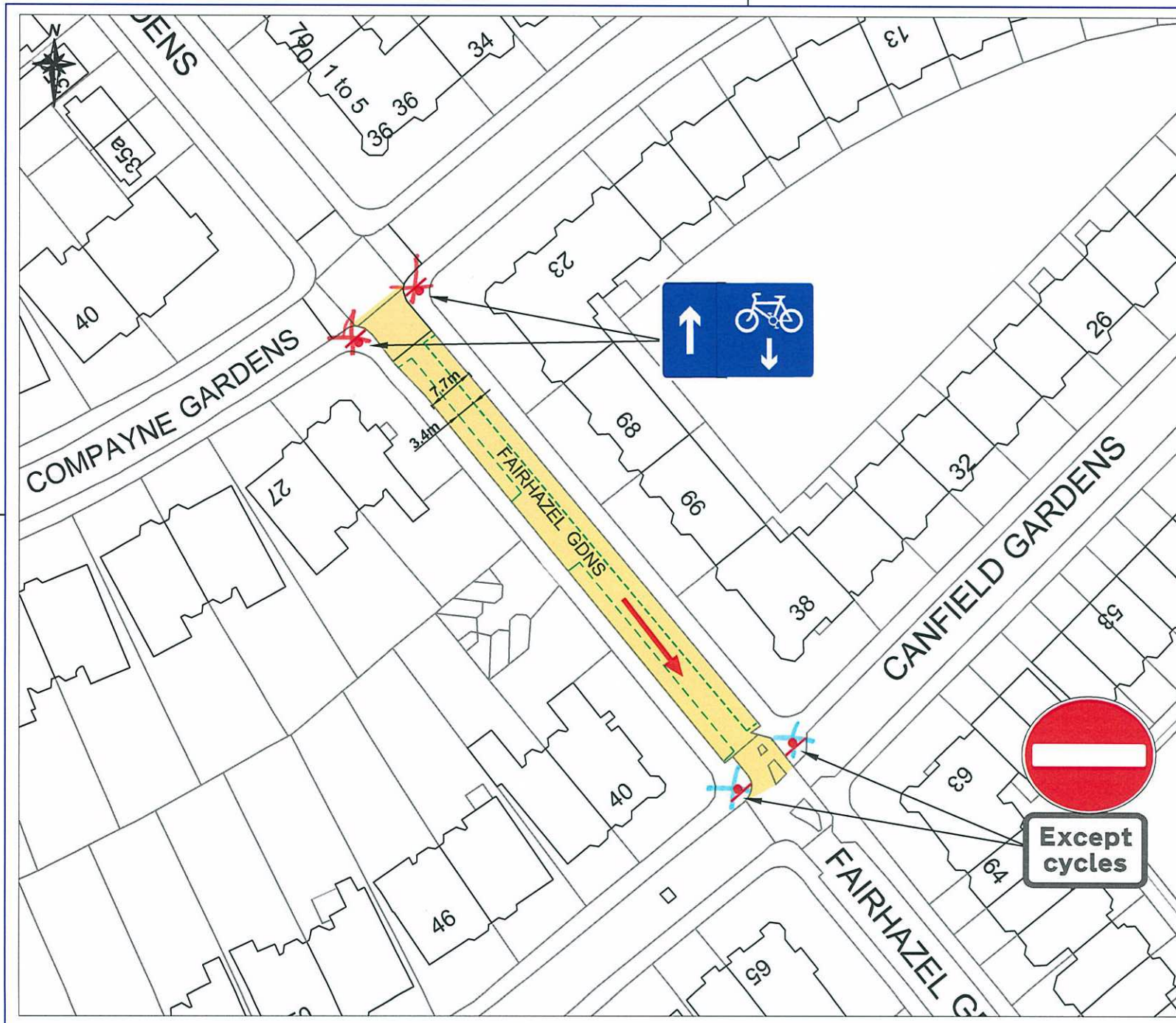
Date  
May 2011

File Ref

Dwg Name

Rev.  
A





## Proposed signs

\*Note - Cycle mark logos will need to be implemented at 10m intervals along Canfield Gardens, with at least a 500mm gap between existing parking bays (as per design standard specifications).

Rev	By	Date	Amendments
B	C.K.	14.07.11	Preliminary



Engineering Service  
London Borough of Camden  
Town Hall, Argyle Street  
London WC1H 8EQ  
Tel 020 7278 4444, Fax 020 7974 6952  
DX 2106 Euston, Minicom 020 7974 6866



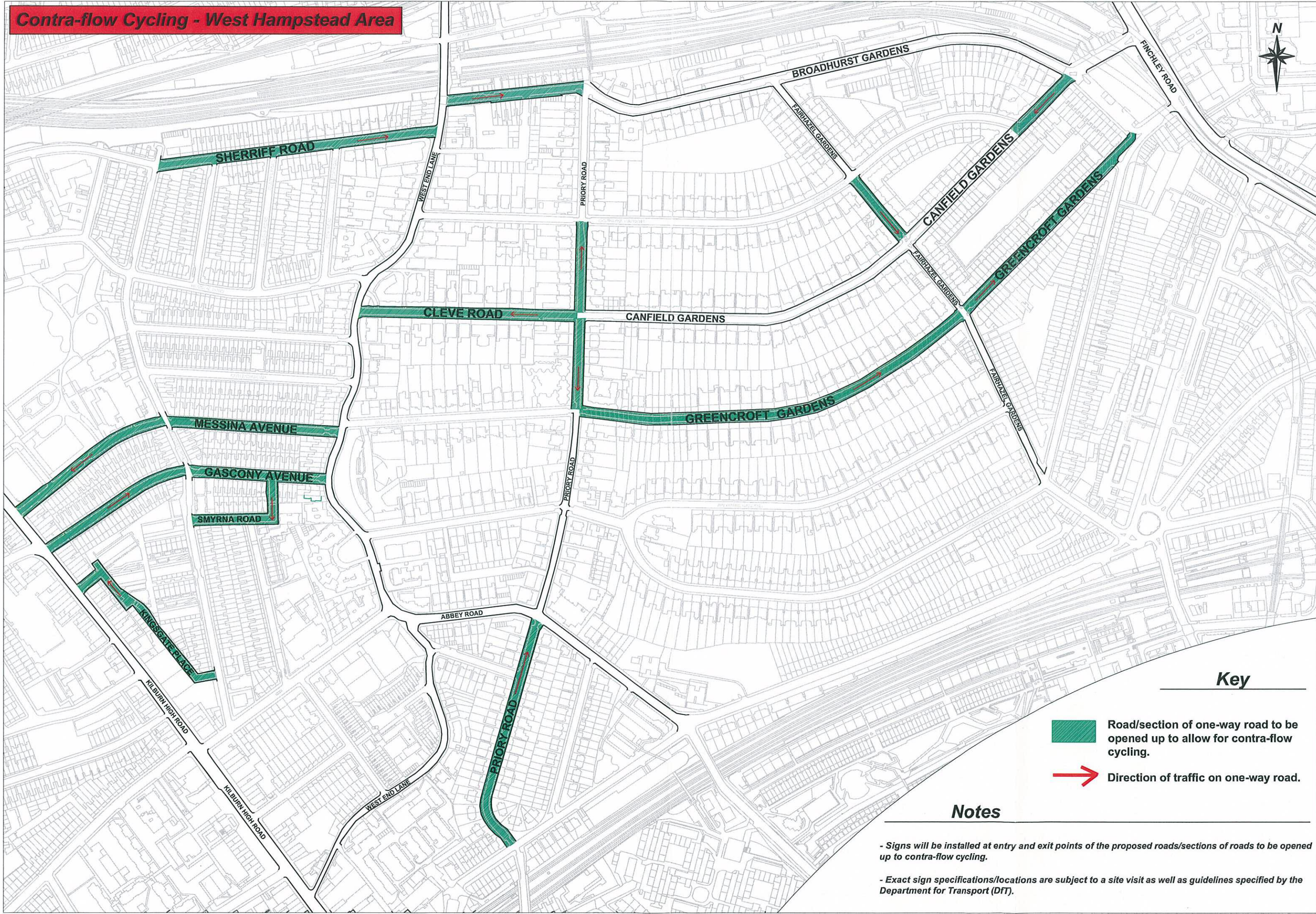
Project  
West Hampstead Area  
Feasibility Study

Drawing Title  
Contra-flow Cycle System  
Option I - Fairhazel Gardens



Scale NTS	Date July 2011
Drawn By C.K.	File Ref
Checked By S.S.	Dwg Name
Drawing Location	
Drawing Number	Rev. A



**Contra-flow Cycling - West Hampstead Area**



**Key**

-  Road/section of one-way road to be opened up to allow for contra-flow cycling.
-  Direction of traffic on one-way road.

**Notes**

- Signs will be installed at entry and exit points of the proposed roads/sections of roads to be opened up to contra-flow cycling.
- Exact sign specifications/locations are subject to a site visit as well as guidelines specified by the Department for Transport (DfT).



NP 960.2

S 24

NOTES:—

1. Details of the cycle symbol are on dwg. S 24.
2. The outline of the tile does not form part of the sign.
3. COLOURS:— BS.873:Part 6  
Symbol, Border  
and Arrows ----- WHITE  
Background ----- BLUE
4. Dimensions are shown in stroke widths (one quarter of notional x-heights). The Table of Sign Sizes shows the actual sign sizes in millimetres.

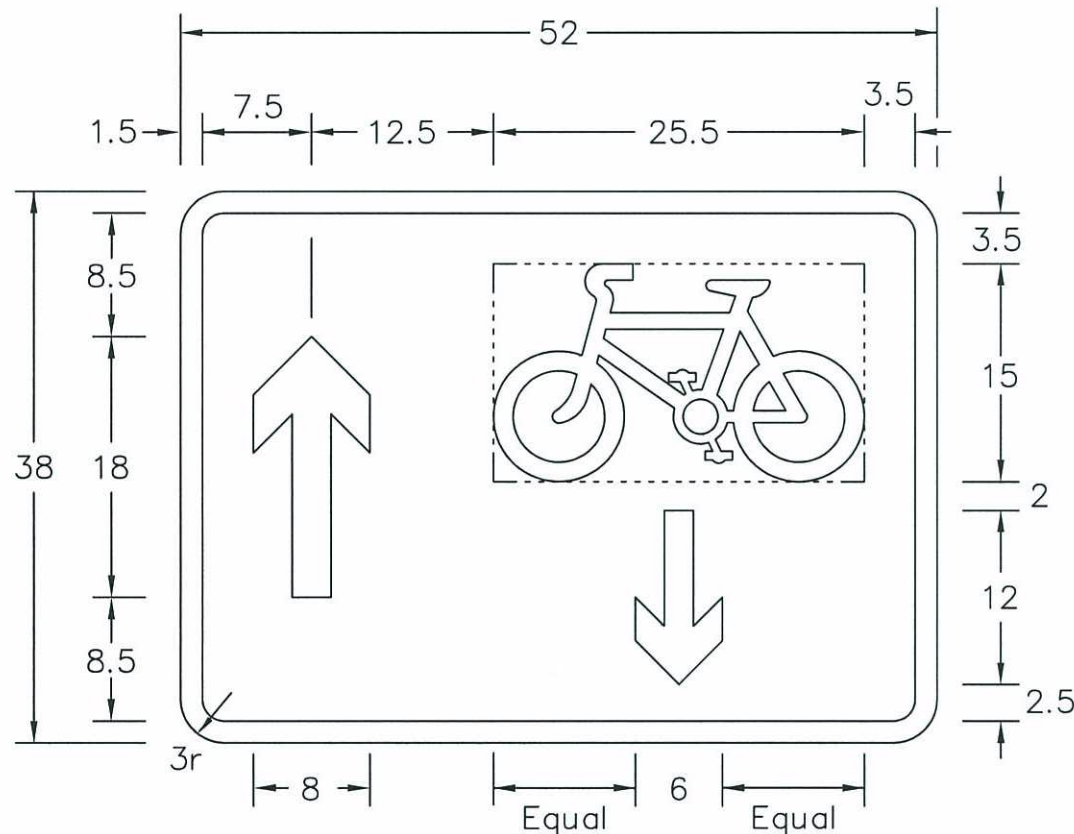


TABLE OF SIGN SIZES (mm)		
Stroke Widths	12.5	15
Width of Sign	650	780
Height of Sign	475	570

Before using this drawing, confirm  
that it has not been superseded.



Title: Regulatory Sign  
CONTRA-FLOW CYCLES

Issue:	Date:
A:	5.12.95
B:	
C:	

Drawn by : R.M. Approved by : R.M.
---

SEE  
NOTE 4

Drawing No.

NP 960.2