

Getting Started with TEMPRO (Version 6.2)

System Requirements

Processor: 1 GHz or faster 32-bit (x86) or 64-bit (x64) processor

Memory: Most of the TEMPRO functionality can be utilised with as little as 1GB of RAM. However the alternative assumption calculations for Origin Destination data are more memory intensive and can require over 2GB, depending upon the size of the selected geographical area. It is recommended that 2GB be installed.

Operating System: Windows 7, Windows Vista or Windows XP

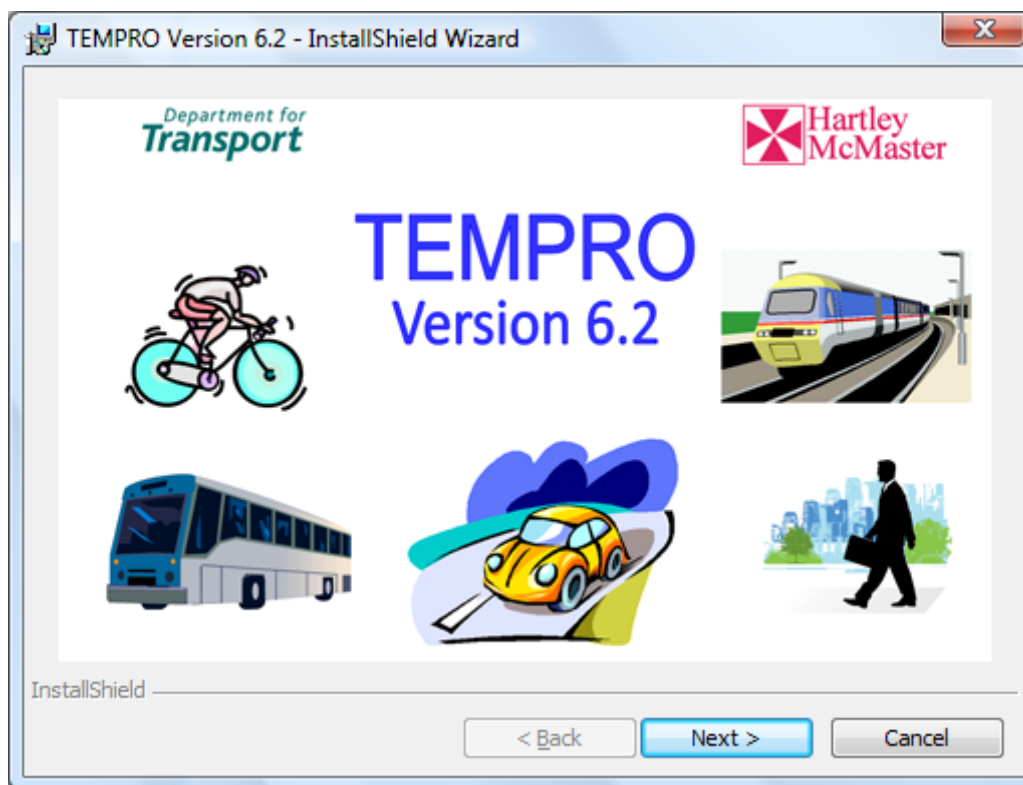
Disk Space: Up to 500MB for .NET Framework 3.5

30MB for the TEMPRO System
~600MB for a full set of NTEM datasets (though this increases if you have multiple versions of the datasets)

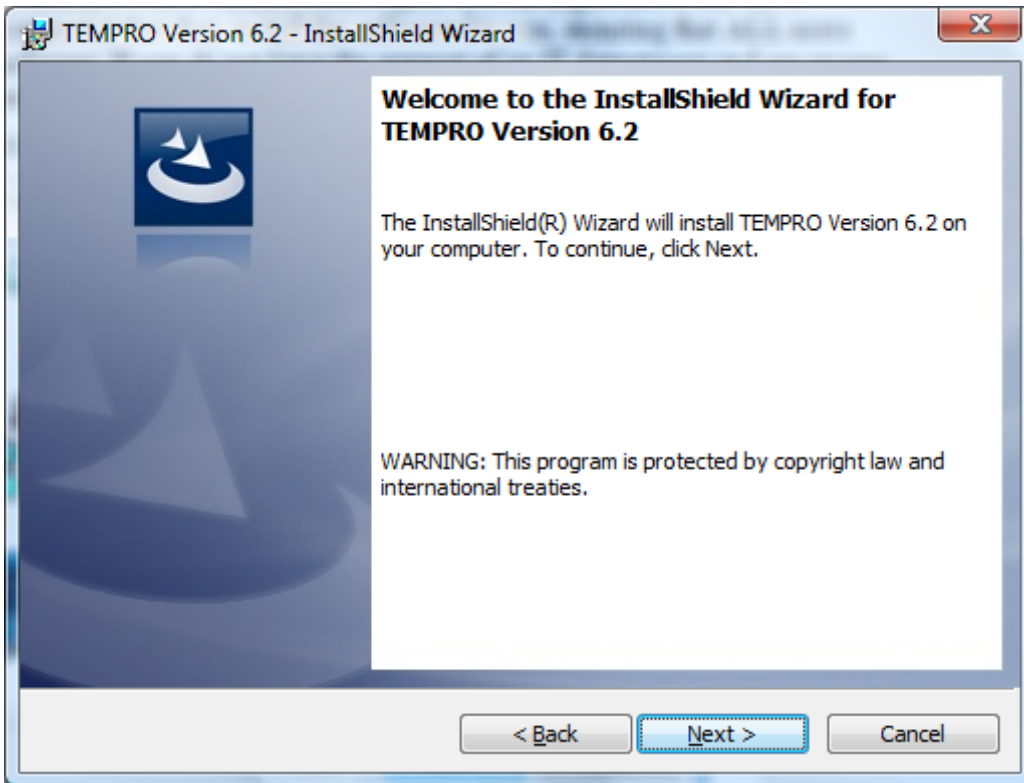
Display: Minimum 800x600, 256 colours

Installing the TEMPRO Software

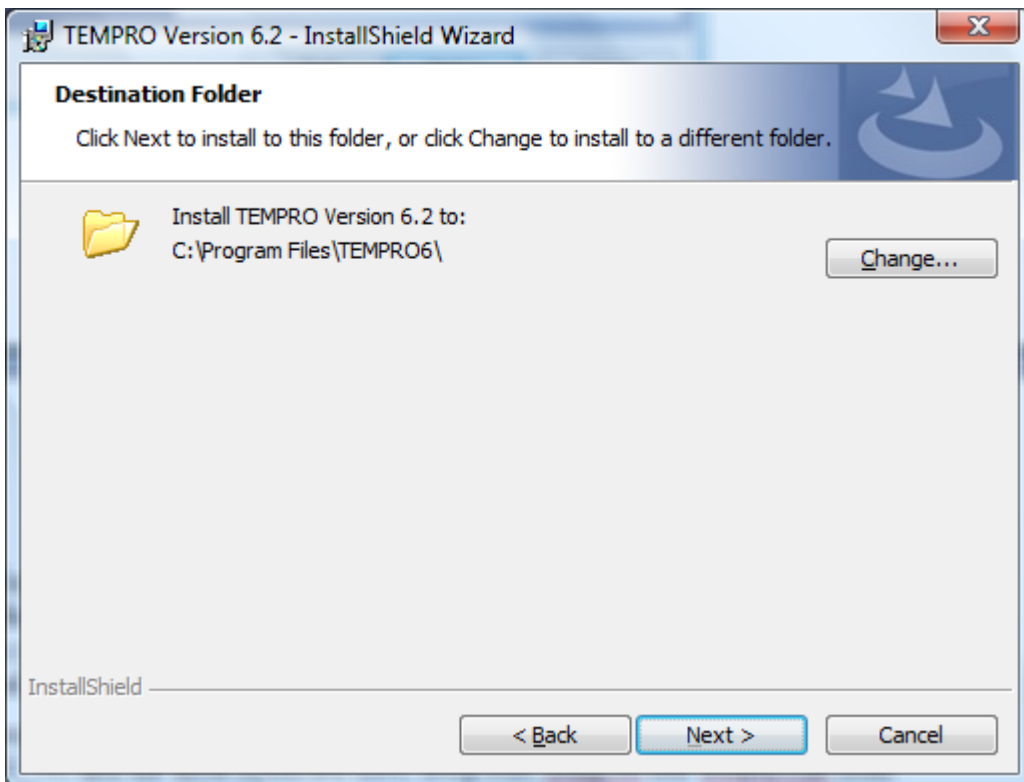
1. Download the full TEMPRO installation package from the web site, the file name is Temprom System_091217_62.exe.
2. To install TEMPRO you must have administrator rights. If your organisation has an IT department then we recommend that they install the software for you, ensuring that ALL users have rights to use the software. If you do not have the support of an IT department and are unsure how to gain administrator rights then please contact the TEMPRO support team.
3. Run Temprom System_091217_62.exe which will start the installation routine for the software. This brings up the installation splash form.



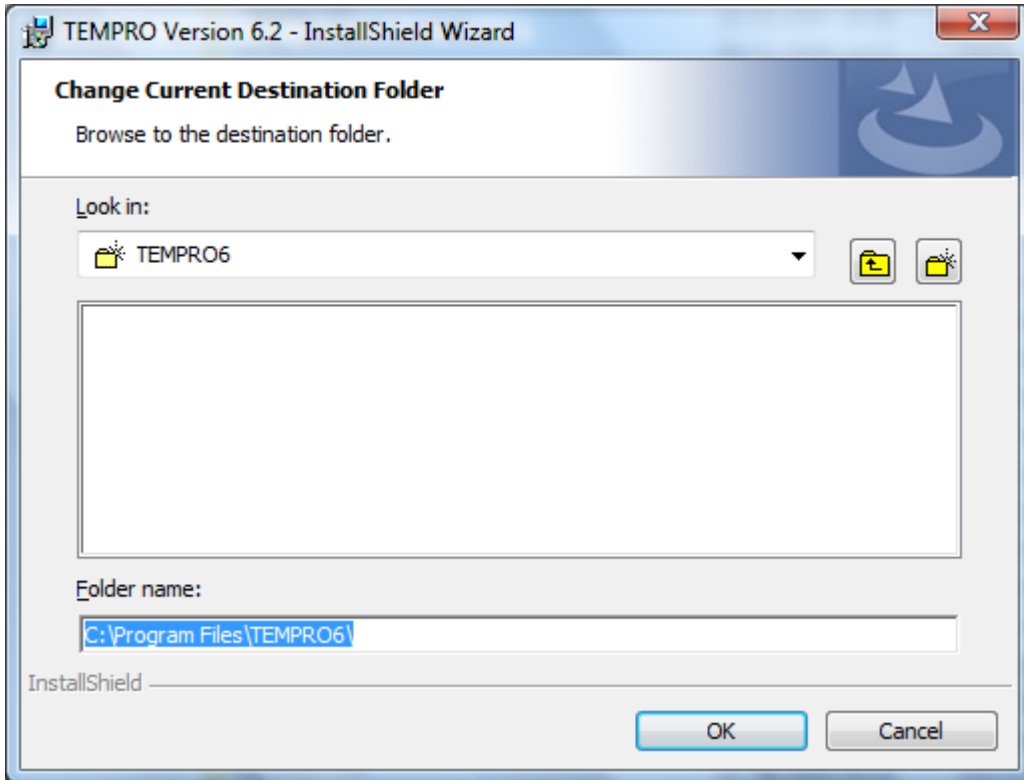
4. Click on the **Next** button to move on to the Welcome form.



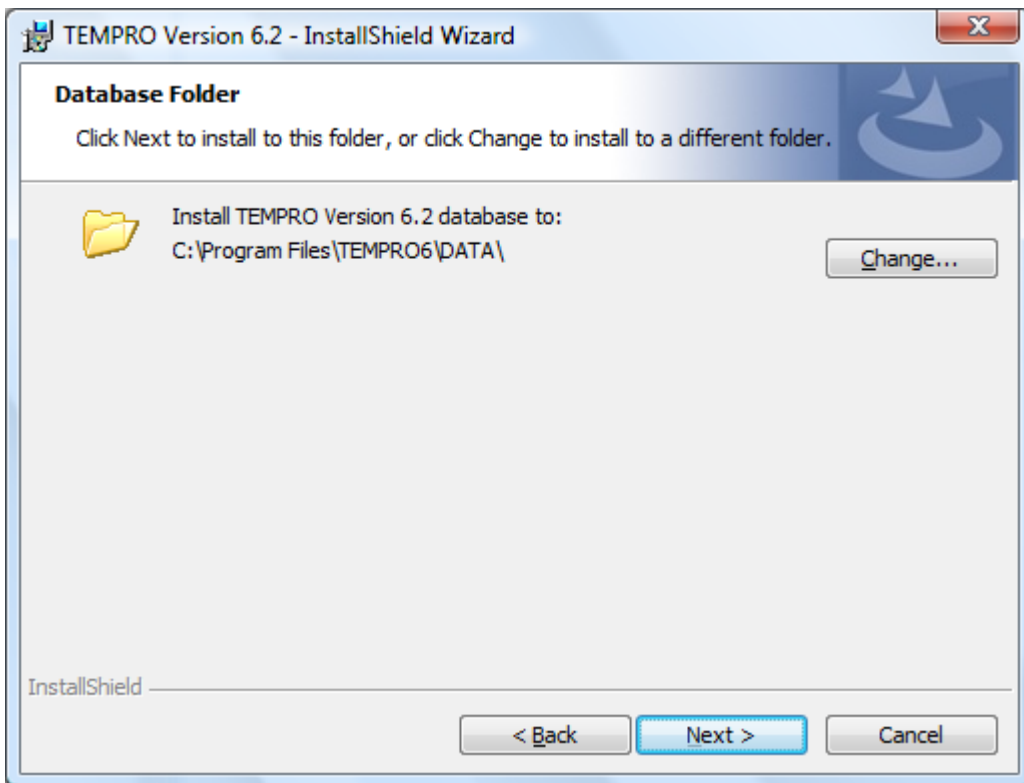
5. Click on **Next** to continue with the installation. The following form allows the installer to specify the folder into which TEMPRO version 6.2 will be installed. By default the folder is c:\Program Files\TEMPRO6. If this is acceptable select **Next**.



6. If you wish to change the installation folder then click on **Change...** to bring up the folder selection dialogue that allows you to navigate to the desired folder via a browser interface or to enter the folder path into the **Folder name:** field.



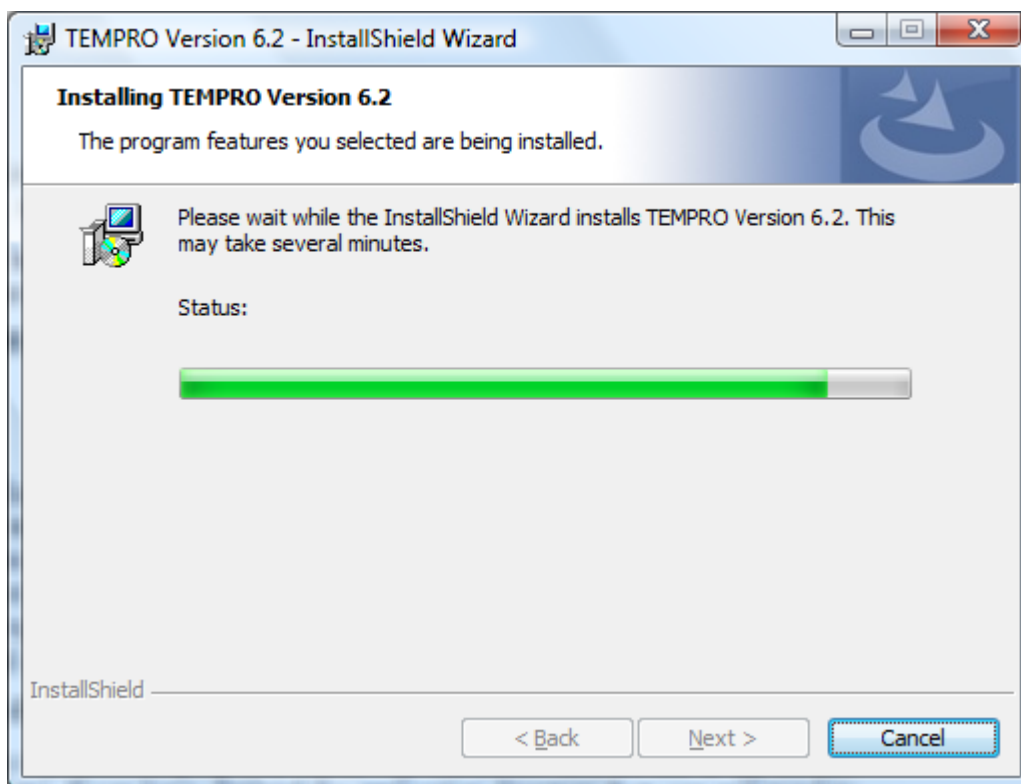
7. The next form allows you to specify the location of the folder in which the NTEM data sets will be placed.



The default folder is the \DATA\ sub-folder of the installation location. Should you wish to change this then select **Change...** to bring up a folder selection dialogue. Selecting **Next** accepts the default.

Please see the instructions later in this document for advice on how to configure TEMPRO so that the NTEM datasets can be stored on a central server for use by multiple TEMPRO users.

8. The next form shows the progress of the installation. Clicking on **Cancel** at any stage halts the installation process and no changes are made to your PC.



9. A final form indicates that installation is complete. Click **Finish** to exit from the installation package.
10. Please note that the installation package will install Version 3.5 of the .NET framework if it is not already present on your PC.

Upgrading from TEMPRO Versions 6.0 or 6.1

If you already have a version of TEMPRO 6 on your PC you can download and run the (much smaller) TEMPRO 6.2 upgrade installation package, Upgrade Tempro 6 to 62_091217_62.exe. The installation process is exactly as for the full installation.

Please note that the workspace database (dbTEMPROSavedSelections.mdb), used to store saved workspaces, study areas, etc. will be overwritten during the upgrade. If it is essential that you retain the saved items you must:

- Copy dbTemproSavedSelections.mdb (it can be found in the /DATA/ folder) to dbTemproSavedSelections.v61 prior to running the upgrade installation package
- e-mail dbTemproSavedSelections.v61 to Tempro support (tempro@dft.gsi.gov.uk) for conversion to the version 6.2 format
- Replace the installed dbTemproSavedSelections.mdb with that returned to you from Tempro support.

Installing Under 64-Bit Versions of Windows

TEMPRO Version 6.2 is a 32-Bit application but will run under 64-Bit versions of Windows using the WOW64 subsystem. Note, however, that the default installation folder is

C:\Program Files (x86)\TEMPRO6

and the default DATA folder is

C:\Program Files (x86)\TEMPRO6\DATA.

NTEM Datasets.

The NTEM data is divided up by English Government Regions, Scotland and Wales with separate data files for each. These data files can be downloaded and then extracted and used as required – users need only download those regions they wish to use. ITEA will be updating these data files on an occasional basis and will post the latest version of each NTEM data file on the site. Users who have given a valid email address when registering on the web site will be contacted by email to tell them of new releases of the program and data files.

1. Download the required NTEM datasets from the web site.
2. Each downloaded file is a self-extracting zip file, which will extract the data set file to the default data directory for 32-Bit Windows (c:\Program Files\TEMPRO6\DATA\). To extract the data from the downloaded file, simply open windows explorer and locate the file. Right click on the downloaded file, and click on Open. A WinZip window will appear, check the destination folder is correct and then Click on the Unzip button. If you have changed the DATA folder during installation, or you are running TEMPRO under a 64-Bit version of Windows (where the default DATA folder is C:\Program Files (x86)\TEMPRO6\DATA), then you will need to change the destination folder.
3. Once you have successfully extracted the data set file from the downloaded file, if you wish you can delete the downloaded file from your machine.
4. The data set files are Microsoft Access Database files which have been password protected.


Changing Data Locations

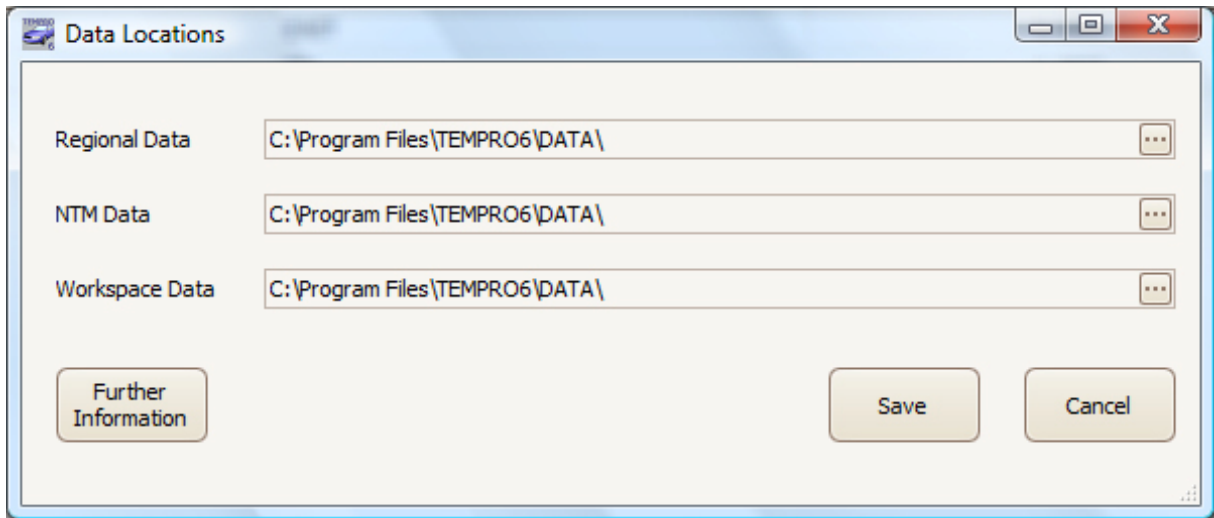
TEMPRO requires a number of databases for its operation:


- NTEM (regional) databases that contain, at a zonal level and by Time Period
 - Planning Data for the zone
 - Production, Attraction, Origin and Destination Trip-End data broken down by Transport Mode, Year and Trip Purpose
 - Trip End data by Car Availability
 - Car Ownership data
- An NTM Traffic Growth database that contains the available datasets (NTMTrafficForecastsDB.mdb)
- A database in which to store saved workspaces, study areas, etc. (dbTEMPROsavedSelections.mdb)

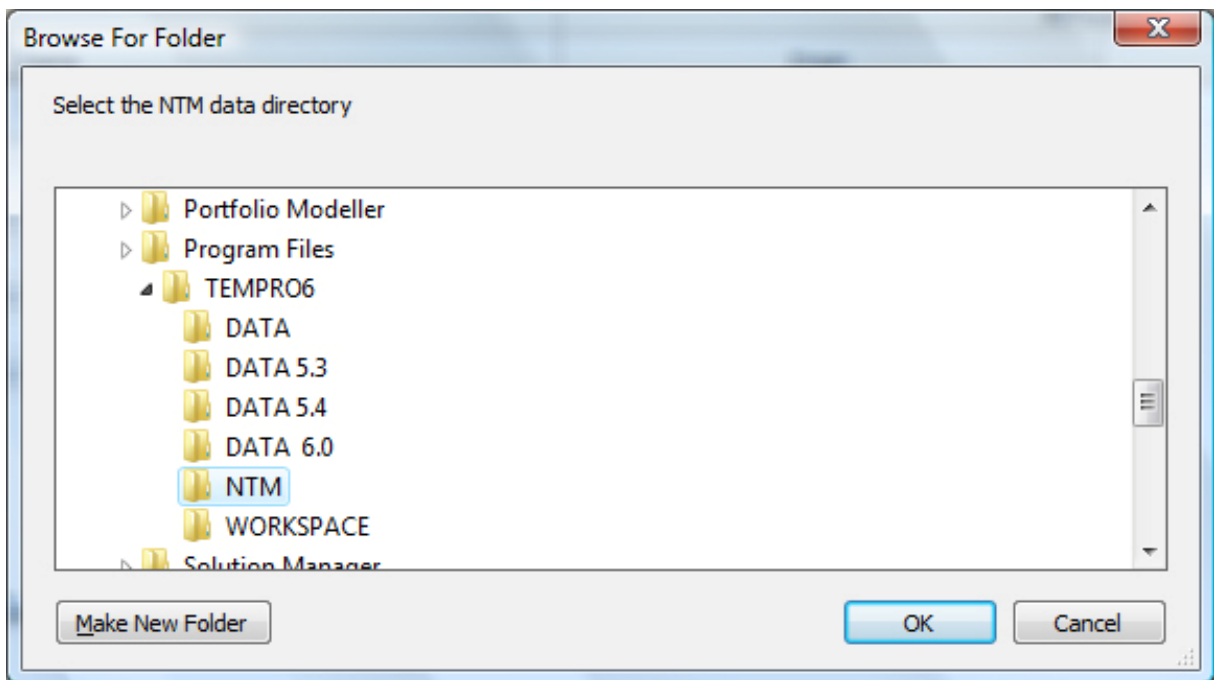
By default these databases are stored in the \DATA\ sub-folder of the installation folder (C:\Program Files\TEMPRO6\ unless otherwise selected by the user during the installation process).

Occasionally you may wish to change these locations, for example, if the regional data is to be held on a central server. If this is the case initially follow the default installation instructions above and copy a single NTEM dataset to the default DATA folder (this can be deleted once the process is complete). Now run TEMPRO as an Administrator. Again, this may require the involvement of your IT department.

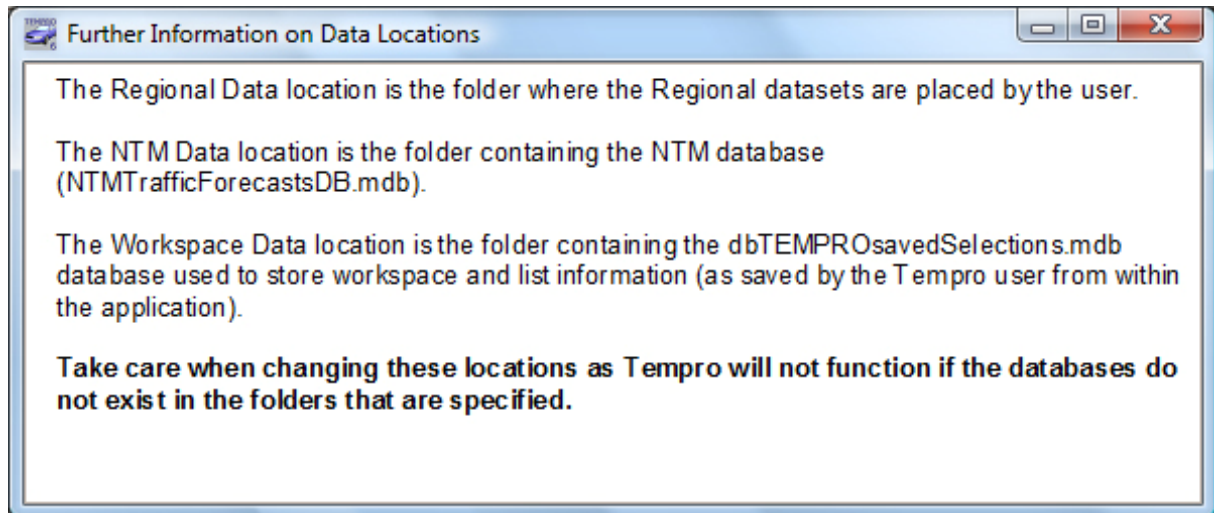
When you belong to the 'Administrators' group (and, in the case of Windows Vista or Windows 7, have run TEMPRO as an Administrator) then the  icon is visible on the toolbar of the Main form. Clicking on the icon produces the Data Locations form.



New data locations can be selected in each case by clicking on the folder selection button . This brings up a folder selection dialogue.



Clicking on Save from the Data Locations form commits the updated data locations to the Windows Registry but they will not become effective until TEMPRO is closed down and opened again. Clicking on the Further Information button produces the following information.



Please take heed of its warning! In addition, it is inadvisable to install the Workspace database in a shared location as this can result in conflicting updates when multiple users attempt to change it simultaneously. TEMPRO is not designed for simultaneous use by multiple users.